



JAP100 Pneumatic Diaphragm Chuck

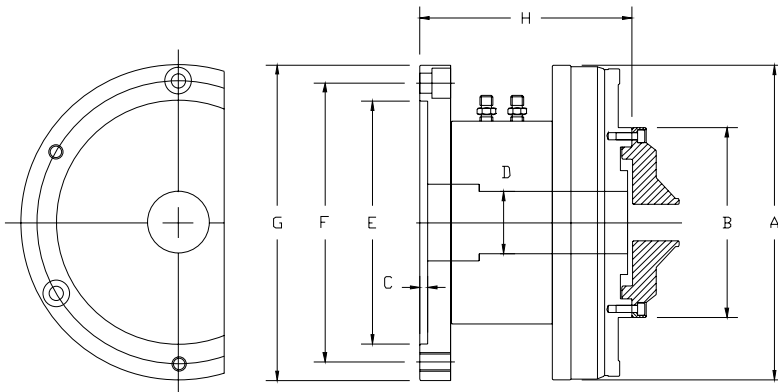


- Repeatability is within 0.005mm.
- Air cylinder is integrated: no rotary cylinder or draw tube is required.
- Real front-mounting design allows easy installation.
- Highly-sealed chuck body helps protect cutting chips, dust or coolant fluid from entering.
- Gentle and precise clamping: suitable for fragile parts clamping.
- O.D. chucking / I.D. expanding chuck possible by changing different jaw pads.

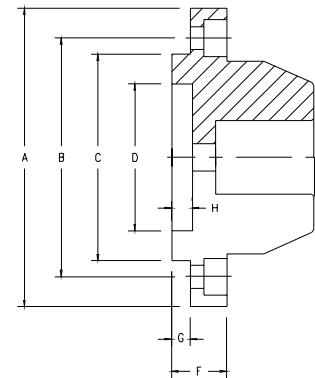
Introduction

JATO JAP100 Cylinder-Integrated Pneumatic Diaphragm Chuck provides you with a high accuracy yet hassle-free diaphragm chucking solution, saving you from the trouble of installing rotary cylinders, tailor making any draw tubes or air feeders. And with its real front-mounting design, the installation is revolutionarily easier than ever.

Dimension and Specification



Jaw Pad Dimension



Model	JAP104	JAP105	JAP106
A	101 (3.98")	137 (5.37")	166 (6.54")
B	60 (2.36")	70 (2.76")	100 (3.94")
C	4.0 (0.16")	3.5 (0.14")	5.5 (0.22")
D	10 (0.39")	12 (0.47")	42 (1.65")
E	70 (2.76")	100 (3.94")	130 (5.12")
F (P.C.D.)	82 (3.23")	115 (4.53")	147 (5.79")
G	97 (3.82")	135 (5.31")	167 (6.57")
H	73 (2.87")	90 (3.54")	107 (4.21")
Mounting Bolts	4H-M6(Front)	3H-M8(Front) 3H-M8(Rear)	3H-M10(Front) 3H-M10(Rear)
Max. RPM	4000	3400	2400
Air Pressure	0.5-7kg/cm ² (7-100psi)	0.5-7kg/cm ² (7-100psi)	0.5-7kg/cm ² (7-100psi)
Jaw Opening	0.20mm (0.008")	0.20mm (0.008")	0.20mm (0.008")
Through Hole	10mm (0.39")	14mm (0.57")	42mm (1.65")
Max. Capacity (Non-Through)	42mm (1.65")	50mm (1.93")	78mm (3.07")
Net Weight	2.8kgs (6.2lbs)	6.0kgs (13.2lbs)	9.5kgs (20.9lbs)

Model	JD-60	JD-70	JD-100
Chuck Model	JAP104	JAP105	JAP106
A	65mm (2.56")	75mm (2.95")	105mm (4.13")
B	52mm (2.05")	60mm (2.36")	90mm (3.54")
C	45mm (1.77")	50mm (1.97")	80.2mm (3.16")
D	32mm (1.26")	32mm (1.26")	65mm (2.56")
F	12mm (0.47")	14mm (0.55")	14mm (0.55")
G	4.0mm (0.16")	5.0mm (0.20")	5.5mm (0.22")
H	4.5mm (0.18")	5.0mm (0.20")	5.0mm (0.20")
Jaw Splits	6	6	6