



# CPC Power Collet Chuck



- Adopting DIN6343 collets: 173E(B42), 185E(B60), 193E(B80).
- Adopting C-44 collets.
- Precision dead-length collet chuck: 0.025mm repeatability.
- CPC is the most popular model for CNC lathes.

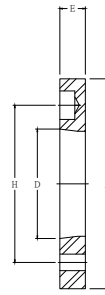
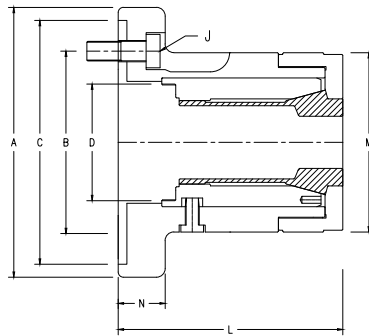
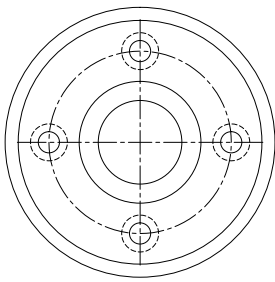


Fig. 1

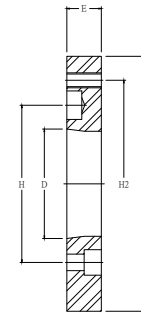


Fig. 2

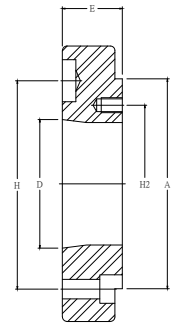


Fig. 3

## Dimension and Specification

Model	CPC-42Z140	CPC-44Z140	CPC-60Z170	CPC-80Z220
A	155mm (6.10")	155mm (6.10")	186mm (7.32")	236mm (9.30")
B (P.C.D)	104.8mm (4.13")	104.8mm (4.13")	133.4mm (5.25")	171.4mm (6.75")
C	140mm (5.51")	140mm (5.51")	170mm (6.69")	220mm (8.66")
D	M66xP1.5	M66xP1.5	M90xP1.5	M100xP2.0
L	125mm (4.92")	125mm (4.92")	140mm (5.50")	164mm (6.60")
M	104mm (4.09")	104mm (4.09")	134mm (5.28")	167mm (6.57")
N	23mm (0.91")	23mm (0.91")	27mm (1.06")	32mm (1.26")
J	3H-M10	3H-M10	6H-M12	6H-M16
Collet Model	DIN6343 173E (B42)	C-44	DIN6343 185E (B60)	DIN6343 193E (B80)
Sleeve Axial Stroke	4.5mm (0.18")	4.5mm (0.18")	4.5mm (0.18")	4.5mm (0.18")
Max. Capacity	42mm (1.65")	44mm (1.73")	60mm (2.36")	80mm (3.15")
Max. Pull Force	2400kgf (5280lbf)	2400kgf (5280lbf)	3000kgf (6600lbf)	3300kgf (7260lbf)
Max. Gripping Force	4200kgf (9240lbf)	4200kgf (9240lbf)	5250kgf (11550lbf)	5775kgf (12705lbf)
Max. RPM	6000	6000	5000	4000
Net Weight	7.0kgs (15.4lbs)	7.0kgs (15.4lbs)	11.5kgs (25.3lbs)	22.5kgs (49.5lbs)
Available Adaptors	A2-4/A2-5/A2-6	A2-4/A2-5/A2-6	A2-5/A2-6/A2-8	A2-6/A2-8/A2-11

## Adaptors Dimension

Chuck Model	Spindle Nose D	Figure	A	H	H2	E
CPC-42Z140 CPC-44Z140	A2-4	Fig. 2	140 (5.10")	82.6 (3.25")	104.8 (4.13")	20 (0.79")
	A2-5	Fig. 1	140 (5.10")	104.8 (4.13")	-	15 (0.59")
	A2-6	Fig. 3	140 (5.10")	133.4 (5.25")	104.8 (4.13")	40 (1.57")
CPC-60Z170	A2-5	Fig. 2	170 (6.69")	104.8 (4.13")	133.4 (5.25")	23 (0.91")
	A2-6	Fig. 1	170 (6.69")	133.4 (5.25")	-	17 (0.67")
	A2-8	Fig. 3	170 (6.69")	171.4 (6.75")	133.4 (5.25")	45 (1.77")
CPC-80Z220	A2-6	Fig. 2	220 (8.66")	133.4 (5.25")	171.4 (6.75")	28 (1.10")
	A2-8	Fig. 1	220 (8.66")	171.4 (6.75")	-	18 (0.71")
	A2-11	Fig. 3	220 (8.66")	235.0 (9.25")	171.4 (6.75")	54 (2.13")