

Sleek yet Semi-rugged !

BM-170

Enterprise Handheld PDA



BM-170 Enterprise Handheld PDA

INDUSTRIES



Education



Retail



Public Transport



Hospitality



Healthcare

BM-170 enterprise handheld PDA presents a rugged smartphone with its sleek and stylish yet robust form factor. Its 3.0MP autofocus camera with barcode reading capability and 3.5" display with G-sensor technology suits for customer facing applications including tableside ordering in hospitality, home nursing care in healthcare, and signature and mobile data collection in logistics.

KEY FEATURES & BENEFITS

Rugged Smartphone



1.5m Drop Resistant, -20°C to 60°C, TouchWindow

BM-170 enterprise PDA presents a rugged Smartphone on the market with its sleek and stylish design yet reliable use in semi-rugged environments. This pocket-sized enterprise PDA is designed to withstand multiple 1.5m drops to steel surface and operate in a temperature range of -20 to 60. Moreover, its crack-resistant TouchWindow LCD supports substantial protection for the touch sensitive display.

Field Mobility



HSDPA(3.5G), WiFi, AGPS & DGPS

BM-170 enterprise PDA delivers an improved mobile workforce through the comprehensive voice and data capability. HSDPA (3.5G) mobile radio allows high-performance voice and data communication and WiFi enables reliable wireless data transmission. Furthermore, an integrated GPS (AGPS and DGPS) enables mobile workers to track the current location and to optimize the routes for field service.

Powerful Performance



806MHz Processor, Windows Mobile 6.5 / Android (optional)

BM-170 enterprise PDA offers the best-in-class performance. With high-speed 806MHz processor and multiple OS compatibility including Windows Mobile 6.5 and Android (optional), BM-170 delivers maximum computing power with easy system integration capability. It provides large memory capacity with 128MB RAM 256MB ROM and supports optional 3,200mAh extended battery ensuring continuous operation.

Outstanding Visibility



3.0MP AF Camera / Barcode Reading(optional), G-sensor

BM-170 enterprise PDA delivers improved asset visibility. Its integrated 3.0MP autofocus camera with barcode reading capability (optional) enables users to capture images and barcode data. Besides, a 3.5" display with G-sensor technology and sensitive touch capability suits for customer facing applications; tableside ordering in hospitality, home nursing care in healthcare, and signature collection in logistics.

Sleek yet Semi-rugged!



Finance

Field Force Automation

Logistics

Construction

Government/Public Sector

APPLICATIONS



Pick-up and Delivery



Order Taking



Security Service



Home Nursing Care



Mobile Learning



Taxi Dispatch



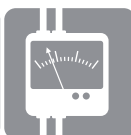
Field Sales



Field Survey



Parking Enforcement



Meter Reading



CPU
PXA320 806MHz



Memory
128MB RAM (up to 256MB)
256MB ROM (up to 512MB)



Battery
3.7V 1,600mAh, Li-ion
3.7V 3,200mAh, Li-ion



Bluetooth
Bluetooth Class II V2.0+EDR



GPS
Integrated AGPS & DGPS



Camera
3.0 megapixel
Barcode Reading (optional)



BM-170 Enterprise Handheld PDA

SPECIFICATIONS

PHYSICAL CHARACTERISTICS	
DIMENSIONS (W x H x D)	72 x 130.5 x 17 mm / 2.8 x 5.1 x 0.65 inch
WEIGHT	Excluding battery: 160g / Including battery: 193g / Including extended battery: 226g
DISPLAY	3.5" QVGA with backlight, TFT TouchWindow LCD, 260K, 240 x 320 3.5" VGA with backlight, TFT TouchWindow LCD, 260K, 480 x 640 (optional)
KEYPAD	Navigation Key, Function Keys
STANDARD BATTERY	Rechargeable, 3.7V 1,600mAh, Li-ion
EXTENDED BATTERY (optional)	Rechargeable, 3.7V 3,200mAh, Li-ion
EXPANSION SLOT	Customer-accessible MicroSD slot for removable memory cards up to 32G
SIM SLOT	1 SIM
AUDIO	2.5mm Headset jack
CAMERA	3 megapixel autofocus camera with LED flash / barcode reading (optional)
GPS	Integrated GPS with AGPS & DGPS (DGPS compatible with Windows Mobile)
G-SENSOR	Integrated G-sensor
PERFORMANCE CHARACTERISTICS	
CPU	PXA320 806MHz
OS	Windows Mobile 6.5 / Windows Mobile 6.1 (optional) / Android (optional)
MEMORY	128MB RAM (up to 256MB RAM) / 256MB ROM (up to 512MB)
INTERFACE	RS-232C (via cable), USB 2.0 (full-speed) Host & Client
USER ENVIRONMENT CHARACTERISTICS	
OPERATING TEMP	-20°C to 60°C / -4°F to 140°F
STORAGE TEMP	-30°C to 70°C / -22°F to 158°F
HUMIDITY	90% non-condensing
DROP SPEC	5ft. / 1.5m drop to steel surface, 2 drops per 6 sides
INTEGRATED RADIO	
WWAN RADIO	GSM/GPRS/eGPRS(850, 900, 1800, 1900MHz)/UMTS/HSDPA(850, 1900, 2100MHz), GSM/GPRS(850, 900, 1800, 1900MHz), or CDMA / 1x / EvDO Rev. A(850, 1800MHz)
WLAN RADIO	IEEE 802.11b/g
WPAN RADIO	Bluetooth Class II V2.0+EDR

* Please ask your sales representative for the specs not listed above.



ACCESSORIES



Battery Adapter Plug Adapter USB Cable Stylus Pen Protection Film

* Accessories above come with product.

Bluebird

Bluebird Soft Inc. (Corporate Headquarters)
1242, Gaepo-dong, Kangnam-gu, Seoul, Korea (ROK)
Phone. +82.70.7730.8000 Fax. +82.2.548.0870

Bluebird USA Inc.
Suite 301, 120 Sylvan Ave, Englewood Cliffs, NJ 07632, USA
Phone. +1.201.944.0822 Fax. +1.201.944.3577

Website
[Global | bluebirdsoft.com](http://Global.bluebirdsoft.com)
[EN | mypidion.com](http://EN.mypidion.com)

