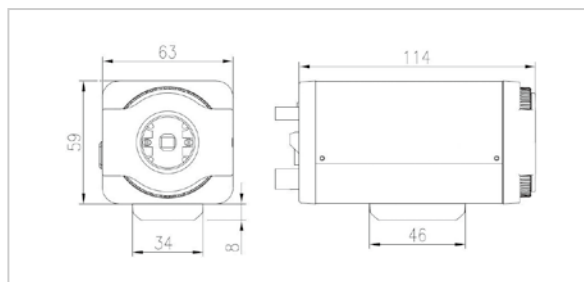




## DS-2CC132P/N CMOS-based Color Camera

- Compact design
- 1/4" CMOS
- Day/night auto switch
- Auto white balance, auto gain control, electronic shutter control, and backlight compensation
- Flickerless mode
- CS mount lens (provide adapter for C mount lens)

Unit: mm



### Specifications

		DS-2CC132P/N
Camera	Image Sensor	1/4 " CMOS
	Effective Pixels	640(H)×480(V)
	Horizontal Resolution	480TVL
	Signal System	PAL/NTSC
	Min. Illumination	0.1Lux @ F1.2
	Electronic Shutter	1/25 s~1/15,000 s
	Day&Night	Electronic
	Synchronization	Internal synchronization
	Video Output	1Vp-p Composite Output (75Ω/BNC)
	S/N Ratio	More than 48dB
Lens	BLC	ON/OFF
	Lens Mount	C/CS mount
General	Power Supply	12VDC, ±10%
	Power Consumption	2W MAX
	Working Temperature	-10°C~60°C(14°F~140°F)
	Dimension	63×59×114mm (2.48"×2.32"×4.49")
	Weight	550g (1.2lbs)

### Available Models

DS-2CC132P, DS-2CC132N