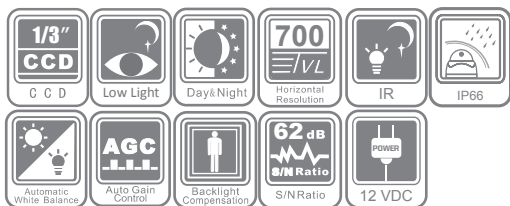


DS-2CC11A2P(N)-IR1(IR3)(IR5)

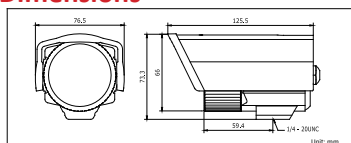
700 TVL 20/40/60m IR Bullet Camera



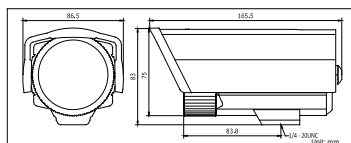
Key features

- 1/3" Sony CCD
- 700 TVL Horizontal Resolution
- Electronic Day/Night
- Super Low Illumination
- 20/40/60m IR Distance
- 30m IR Distance
- IP66 Rating

Dimensions



DS-2CC11A2P(N)-IR1



DS-2CC11A2P(N)-IR3(IR5)

Accessories



DS-1212ZJ
(Indoor wall mount)



DS-1213ZJ-S
(Outdoor Wall Mount)

DS-2CC11A2P(N)-IR1(IR3)(IR5)	
Camera	
Image Sensor	1/3" SONY CCD
Signal System	PAL/NTSC
Effective Pixels	PAL: 976 (H) × 582 (V) NTSC: 976 (H) × 494 (V)
Min. Illumination	0.001 Lux @ (F1.2, AGC ON), 0 Lux with IR 0.002 Lux @ (F1.8, AGC ON), 0 Lux with IR
Shutter speed	PAL: 1/50 s to 1/100,000 s NTSC: 1/60 s to 1/100,000 s
Lens	"-IR1" series: 6 mm @ F1.8 (3.6 mm, 2.8 mm optional) Angle of view: 47° (6 mm) "-IR3" series: 12 mm @ F1.8 (3.6 mm, 6 mm, 8 mm, 16 mm optional), Angle of view: 22.72° (12 mm) "-IR5" series: 16 mm @ F1.8 (3.6 mm, 6 mm, 8 mm, 12 mm optional), Angle of view: 16.4° (16 mm)
Lens Mount	M12
Day & Night	Electronic
Horizontal Resolution	700 TVL
Synchronization	Internal synchronization
Video Output	1Vp-p composite output (75 Ω/BNC)
S/N Ratio	More than 62 dB
BLC	On
General	
Working Temperature/ Humidity	-30 °C - 60 °C (-22 °F - 140 °F) Humidity 90% or less (non-condensing)
Ingress Protection	IP66
IR Range	"-IR1" series: approx 10 to 20 meters "-IR3" series: approx 30 to 40 meters "-IR5" series: approx 50 to 60 meters
Power Supply	12 V DC ± 10%
Power Consumption	IR1: Max. 3 W IR3: Max. 6 W IR5: Max. 8 W
Dimensions	IR1: 76.5×73.3×125.5 mm (3.01" × 2.89" × 4.94") IR3&IR5: 86.5 × 83 × 165.5 mm (3.41" × 3.27" × 6.52")
Weight	IR1: 600 g (1.32 lbs) IR3&IR5: 1000 g (2.20 lbs)

Available models

PAL: DS-2CC11A2P-IR1, DS-2CC11A2P-IR3, DS-2CC11A2P-IR5
NTSC: DS-2CC11A2N-IR1, DS-2CC11A2N-IR3, DS-2CC11A2N-IR5