

# Cylinder

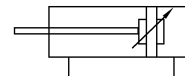
## Characteristic:

- Front and rear caps are finished by aluminum alloy die-casting, CNC mechanically processed with high precision.
- Aluminum tube is imported, stainless forever with friction & corrosion resistance.
- Adopt imported none lubrication, long time service and no need lubrication maintenance.
- Unique cushion technique makes smooth action.
- May add the sensor equipment to easily control.
- In terms of SC series, pull-rod is hidden inside.

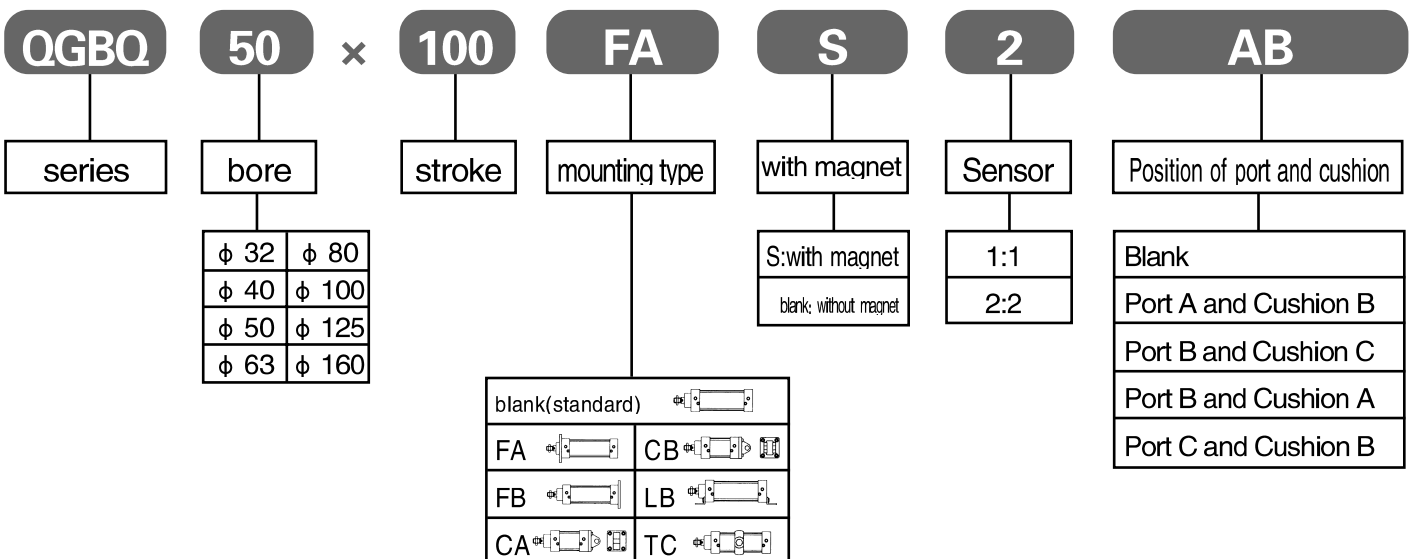


## Specification:

Mode	32	40	50	63	80	100	125	160
Motion	Double acting							
Fluid	Compressed Air							
Operating pressure range(Mpa)	0.1~1							
Operating speed mm/sec	50~500							
Ambient temperature °C	-10~70							
Cushion	adjustable cushion at both ends							
Port size	1/8"	1/4"	3/8"					1/2"



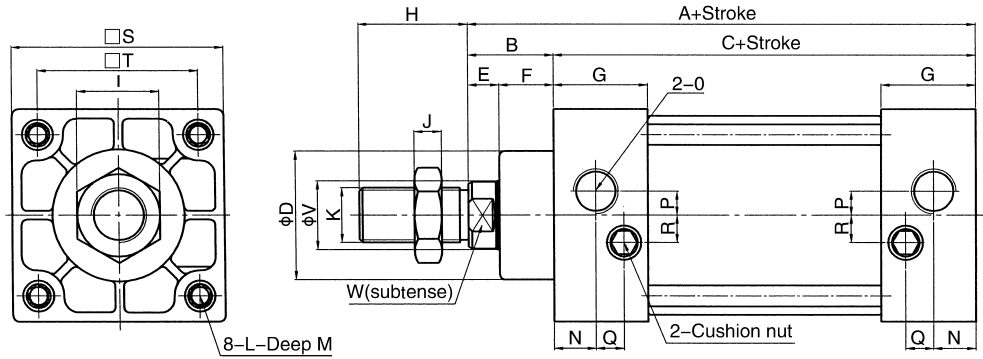
## How to order:



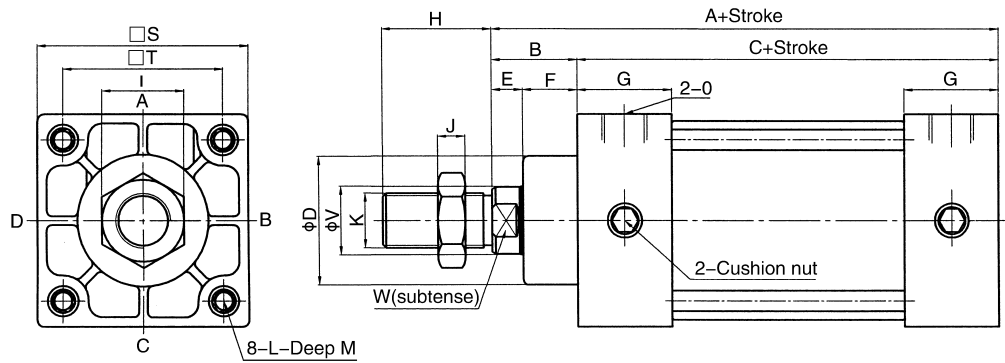
●The choice of port and cushion position is limited to QGBQ125 and QGBQ160

## Standard Dimension:

■  $\phi$  32~  $\phi$  100



■  $\phi$  125~  $\phi$  160



bore/stroke	A	B	C	D	E	F	G	H	I	J	K	L
32	118	25	93	28	10	15	27.5	22	17	6	M10 × 1.25	M6
40	118	25	93	32	10	15	27.5	24	17	7	M12 × 1.25	M6
50	118	25	93	37.5	9	16	27.5	32	23	8	M16 × 1.5	M8
63	121	26	95	38	10	16	27.5	32	23	8	M16 × 1.5	M8
80	143	35	107	43	15.5	21	33	40	26	10	M20 × 1.5	M10
100	143	35	108	43	15.5	21	33	40	26	10	M20 × 1.5	M10
125	149	35	114	52	14	21	38	54	38	11	M27 × 2	M12
160	157	41	116	62	16	25	38	72	50	13	M36 × 2	M16

bore/stroke	M	N	O	P	Q	R	S	T	V	W
32	13	12	G1/8"	6	8	6	45.5	33	12	10
40	13	12	G1/4"	6	8	7	50	37	16	13
50	13	12	G1/4"	7	8	8	62	47	20	17
63	13	14	G3/8"	7	8	8	75	56	20	17
80	14	16	G3/8"	10	10	14	94	70	25	22
100	16	16	G1/2"	10	10	11	112	84	25	22
125	15	-	G1/2"	-	-	-	138	104	32	27
160	18	-	G1/2"	-	-	-	178	134	40	36