

- General Actuators for:
- Torque:
- Open/Close control:
- Modulating control:

**DN600...1200 Butterfly Valves**  
**6000...23000Nm**  
**QB6000.., QB8000.., QB10000..,**  
**QB12000.., XZA17500.., XZA23000..**  
**QB6000P.., QB8000P.., QB10000P..,**  
**QB12000P.., XZA17500P.., XZA23000P..**



**Technical data**

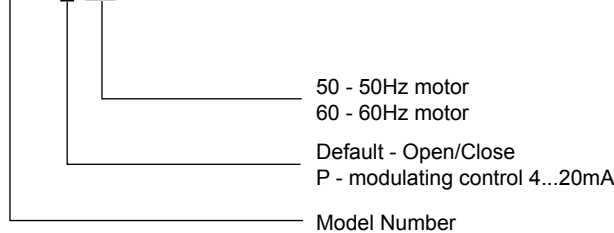
Electrical Data	
Nominal voltage	AC 380V ±10% 3-PH, 50/60Hz*
Nominal voltage range	AC 342...418V 3-PH, 50/60Hz
Connecting cable	M33 cable connector, screw terminals
Motor protection	F class
Gear train	Steel
Control/Position feedback signal	DC 4...20mA
Sensitivity	1% input signal
Angle of rotation	90°
Position indicator	Top mounted domed indication
Ambient temp.	QB.. -20°C..+50°C XZA.. -20°C..+55°C
Humidity	5...95% RH, non-condensing
Degree of protection	IP67
Manual Operation	Manual by override handwheel
Housing material	Cast iron

\*3-phase AC 415V for QB../XZA.. actuator is available on request.

Model No.	Torque (Nm)	Motorpower for reference (kW)	Running time 90° (s)	Running current of motor (A)	Manual override	Weight (kg)
QB6000..	6000	0.55	60	2.50	Handwheel	120
QB8000..	8000	1.10	60	3.40	Handwheel	210
QB10000..	10000	1.50	60	3.70	Handwheel	210
QB12000..	12000	2.20	60	4.50	Handwheel	210
XZA17500..	17500	3.00	50	6.50	Handwheel	395
XZA23000..	23000	4.00	56	13.00	Handwheel	560

**Ordering sample**

QB8000 P -50

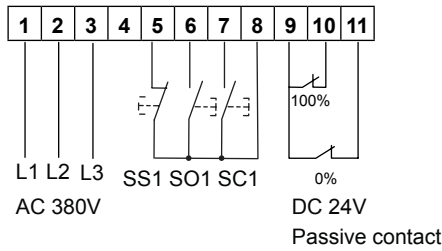


eg: Modulating control  
 QB10000P-50  
 Open/Close control  
 QB10000-50

Wiring diagrams

**QB.. Open/Close control**

XZA..

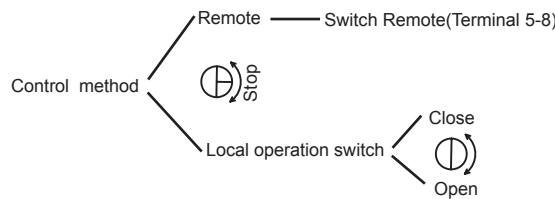


**Terminal**

#1	Power supply Hot line
#2	Power supply Hot line
#3	Power supply Hot line
#5	Switch for stop SS1
#6	Switch for Open SO1
#7	Switch for Close SC1
#8	Com
#9	Com
#10	Feedback of fully Open
#11	Feedback of fully Close

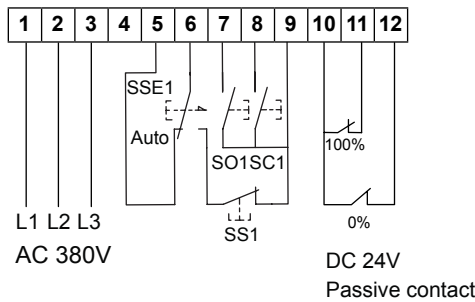
**Notes:**

- Caution: Power supply voltage!
- Relays are needed in parallel connection of several actuators.
- Maximal 10 min. of duty cycle.



**QB.. Modulating control**

XZA..

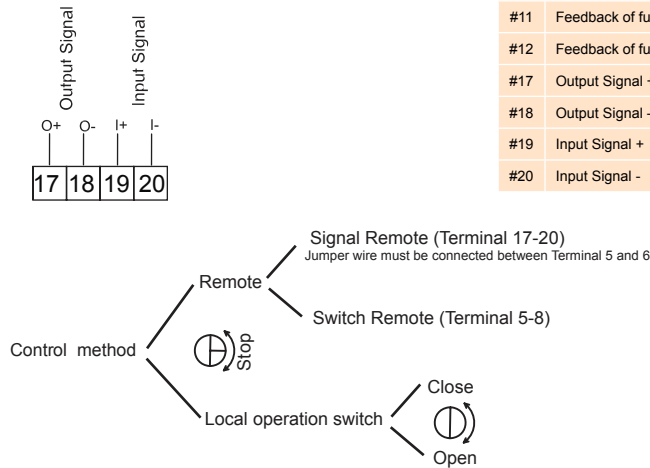


**Terminal**

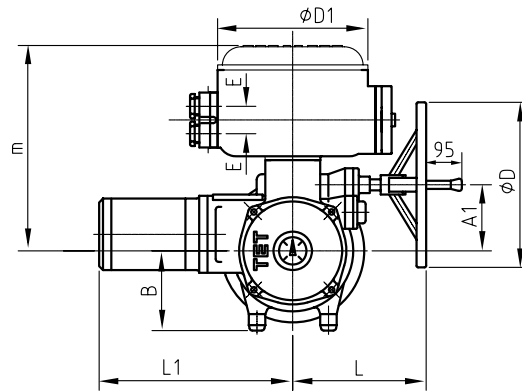
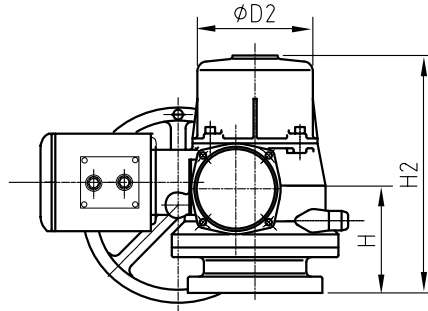
#1	Power supply Hot line
#2	Power supply Hot line
#3	Power supply Hot line
#5	Signal Remote
#6	Switch Remote/Signal Remote Selection SSE1
#7	Switch for open SO1
#8	Switch for close SC1
#9	Com
#10	Com
#11	Feedback of fully Open
#12	Feedback of fully Close
#17	Output Signal +
#18	Output Signal -
#19	Input Signal +
#20	Input Signal -

**Notes:**

- Caution: Power supply voltage!
- The control signal has to be separated from the others and shielded.
- Maximal 10 min. of duty cycle.

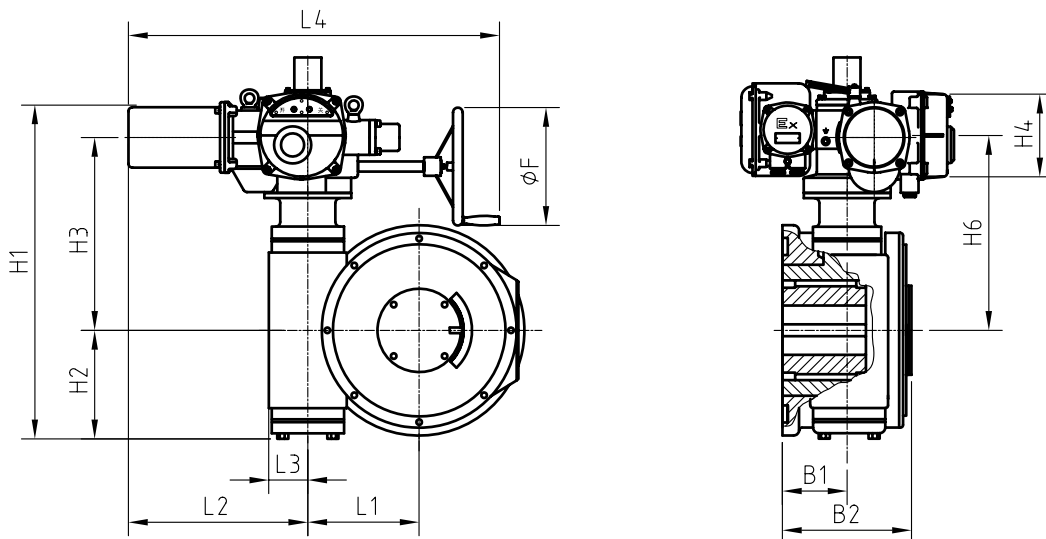


Dimensions [mm]



QB..

Type	A1	B	$\phi D$	$\phi D1$	$\phi D2$	m	E	H	H2	L	L1
QB6000..	134	180	457	240	230	368	21	204	417	262	510
QB8000...12000..	164	212	457	240	270	388	21	247	496	410	710



XZA..

Type	L1	L2	L3	L4	B1	B2	H1	H2	H3	H4	H6	$\phi F$
XZA17500..	197	580	98	1156	121	258	801	233	443	246	446	305
XZA23000..	248	580	98	1156	127	280	848	255	440	246	471	305