

## Solenoid Valve/Air Control Valve

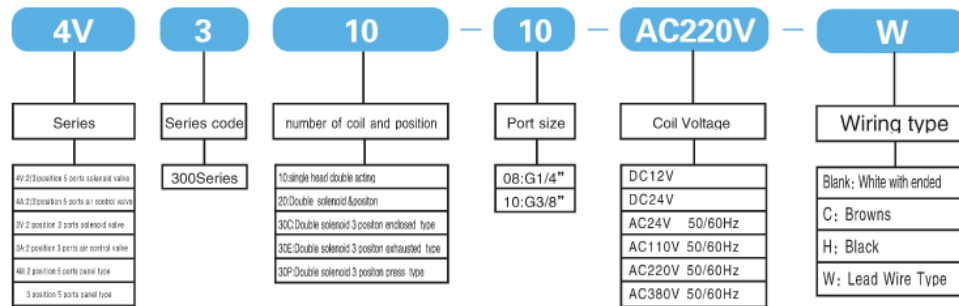
### Characteristics:

- Service life: 10 million cycle times.
- The bodies are mirror finished and hardening treated.
- Equipped with imported oil seals with smaller friction and longer service life.
- With imported coils, low power consumption, speedy response.
- Capable of long service time without being damaged.

### Specification:

Type	4V310-08	4V320-08	4V330C-08	4V330E-08	4V330P-08	4V310-10	4V320-10	4V330C-10	4V330E-10	4V330P-10	
Position number	Two Position Five Way		Three Position Five Way			Two Position Five Way		Three Position Five Way			
Effective sectional area	25mm <sup>2</sup> (CV=1.40)		18mm <sup>2</sup> (CV=1.00)			30mm <sup>2</sup> (CV=1.68)		18mm <sup>2</sup> (CV=1.00)			
Type	3V310-08	3V320-08	3A310-08	3A320-08		3V310-10	3V320-10	3A310-10	3A320-10		
Position number	Two Position Three Way				Two Position Three Way						
Effective sectional area	25mm <sup>2</sup> (CV=1.40)				30mm <sup>2</sup> (CV=1.68)						
Port size	input=output=exhausted=G1/4"				input=output=G3/8"			output=G1/4"			
Fluid	Air										
Acting type	Internally pilot-actuated										
Working pressure MPa	0.15~0.8										
Ambient temperature °C	-5~50										
Voltage range	± 10%										
Power consumption	AC:5.5VA DC:4.8W										
Insulation & Protection level	Grade F, IP65										
Wiring Form	Out wire or end type										
Max.Flucose	5 times/minute										

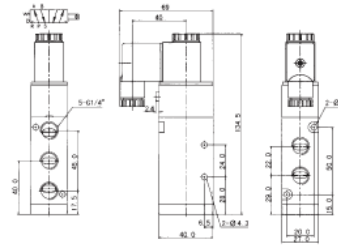
### How to order:



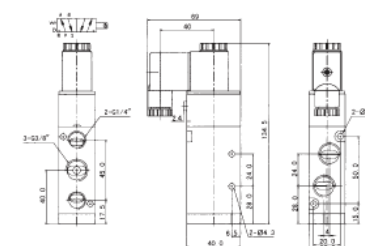
## Solenoid Valve/Air Control Valve

### Dimensions:

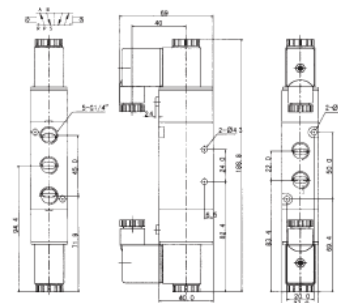
#### 4V310-08



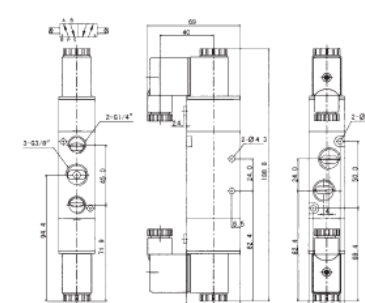
#### 4V310-10



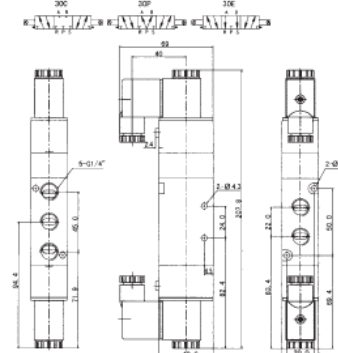
#### 4V320-08



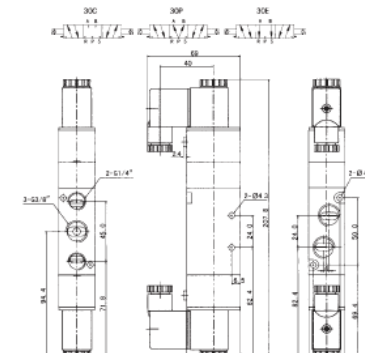
#### 4V320-10



#### 4V330-08



#### 4V330-10

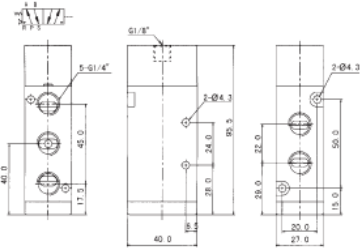




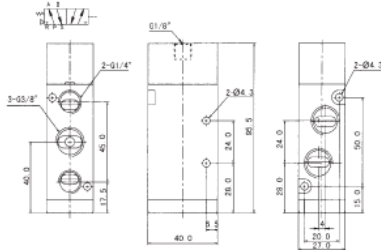
# Solenoid Valve/Air Control Valve

## Dimensions:

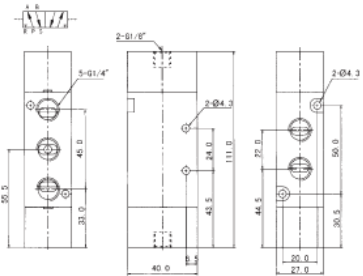
4A310-08



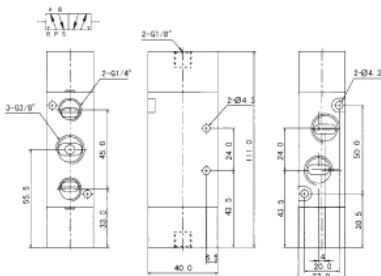
4A310-10



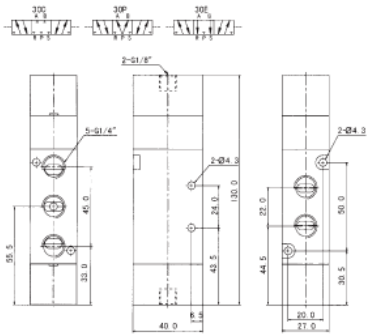
4A320-08



4A320-10



4A330-08



4A330-10

