

TR-120FF

4th, 5th Axis for Tilting NC Rotary Table

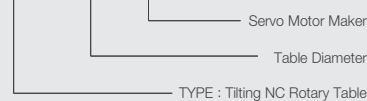


TR-SERIES

- Compact Tilting Series
- High Precision, High Speed Systems
- Convenient JIG Design
- Compact Design
- Extremely Rigid Body
- High Clamping power (Hydraulic)

Model No.

TR-120FF



* Servo Motor Brand

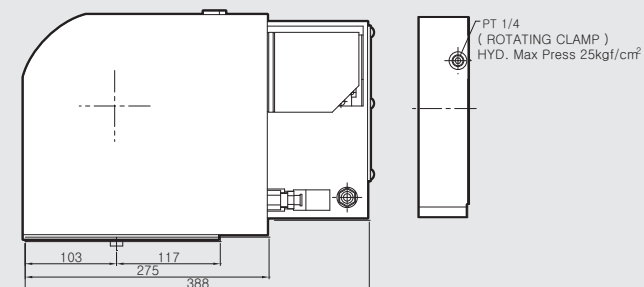
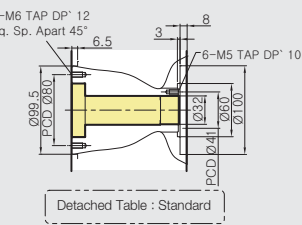
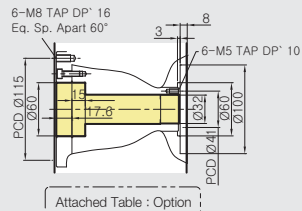
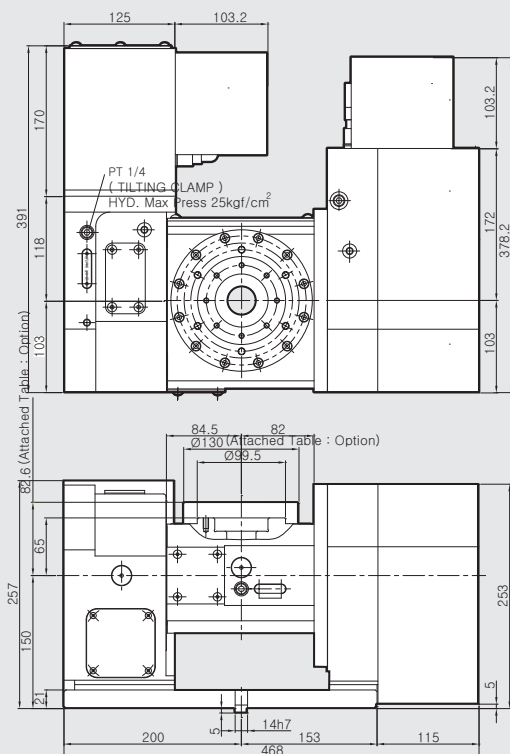
AC Servo Motor is ABSOLUTE Type

- F : FANUC
- S : SIEMENS
- M : MITSUBISHI
- P : PANASONIC
- Y : YASKAWA
- H : HEIDENHAIN
- L : LS MECAPION
- SY : SANYO
- FA : FAGOR
- O : OKUMA

Table Dia. [mm]	Center Height [mm]	Resister Dia.on Face Plate [mm]	Spindle Through Hole Dia. [mm]	Clamp Method	Allowable Work Inertia [kgm ²]	Net Weight [kg]
(Table: Option) Ø130	150	Ø60H7	Ø32H8	Hydraulic Max. 20bar	0.06	115
	Max. Spindle Speed [mm ⁻¹]	Gear Ratio	Repeatability Accuracy [sec]	Indexing Accuracy [sec]	Clamp Togue [N·m]	Servo Motor [FANUC]
Rotating Axis	33.3	1/90	4	30	240	ciF2 / 5000
Tilting Axis	16.6	1/180	4	60	380	ciF2 / 5000
Allowable Load					Allowable Cutting Torque	Moment Of Tilting Weight
Horizontal [kg]	Vertical [kg]	F [kN]	F x L [N·m]	F x L [N·m]	[N·m]	W x L [kgf·m]
35	20	4	200	120	190	10

TR-120FF

Tilting Range : -20° ~ 110°



TR-200FF

4th, 5th Axis for Tilting NC Rotary Table

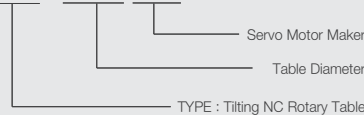


TR-SERIES

- Tilting Series
- High Precision, High Speed Systems
- Convenient JIG Design
- Extremely Rigid Body
- High Clamping power (Hydraulic)

Model No.

TR-200FF



* Servo Motor Brand

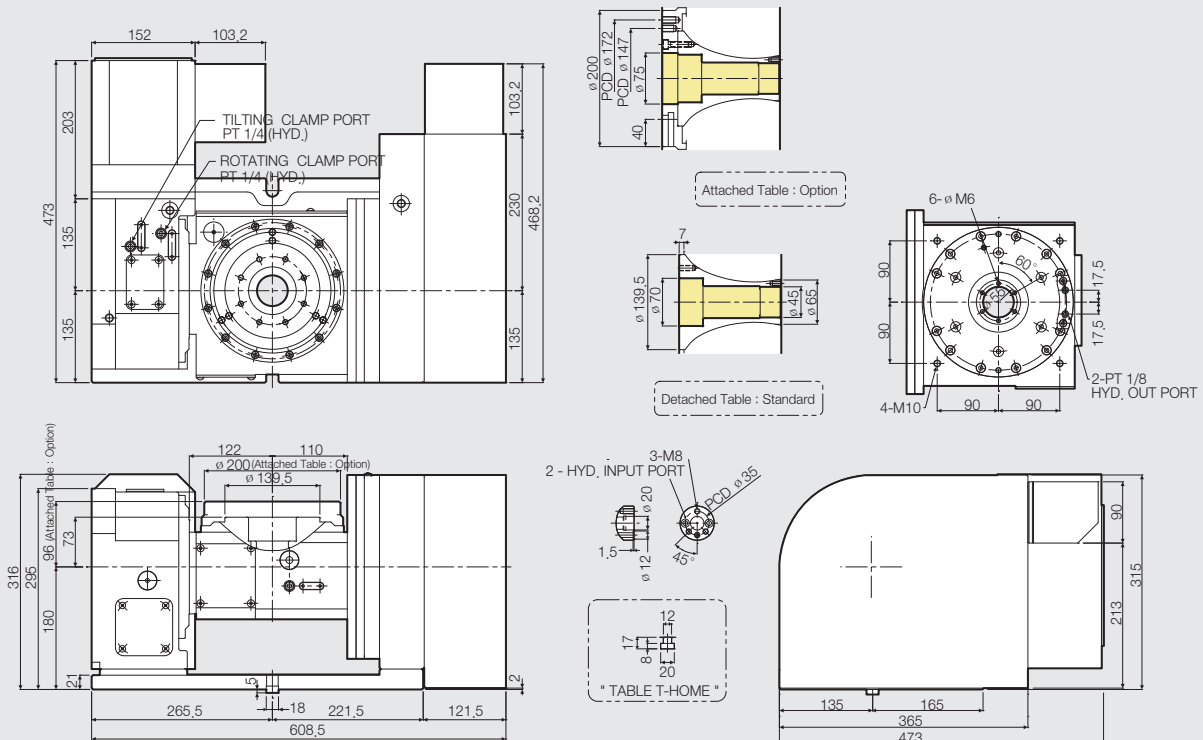
AC Servo Motor is ABSOLUTE Type

- F : FANUC
- S : SIEMENS
- M : MITSUBISHI
- P : PANASONIC
- Y : YASKAWA
- H : HEIDENHAIN
- L : LS MECAPION
- SY : SANYO
- FA : FAGOR
- O : OKUMA

Table Dia. [mm]	Center Height [mm]	Resister Dia.on Face Plate [mm]	Spindle Through Hole Dia. [mm]	Clamp Method	Allowable Work Inertia [kgm ²]	Net Weight [kg]	
(Table: Option) Ø200	180	Ø70H7	Ø45H8	Hydraulic Max. 35bar	0.25	250	
		Max. Spindle Speed [mm ⁻¹]	Gear Ratio	Repeatability Accuracy [sec]	Indexing Accuracy [sec]	Clamp Togue [N·m]	Servo Motor [FANUC]
Rotating Axis		33.3	1/90	4	30	450	aiF4 / 4000
Tilting Axis		16.6	1/180	4	60	800	aiF4 / 4000
Allowable Load					Allowable Cutting Torque	Moment Of Tilting Weight	
Horizontal [kg]	Vertical [kg]	F [kN]	F x L [N·m]	F x L [N·m]	[N·m]	W x L [kgf·m]	
60	40	5	800	450	250	12	

TR-200FF

Tilting Range : -20° ~ 110°



TR-250FF

4th, 5th Axis for Tilting NC Rotary Table



TR-SERIES

- Tilting Series
- High Precision, High Speed Systems
- Convenient JIG Design
- Extremely Rigid Body
- High Clamping power (Hydraulic)

Model No. **TR-250FF**



* Servo Motor Brand

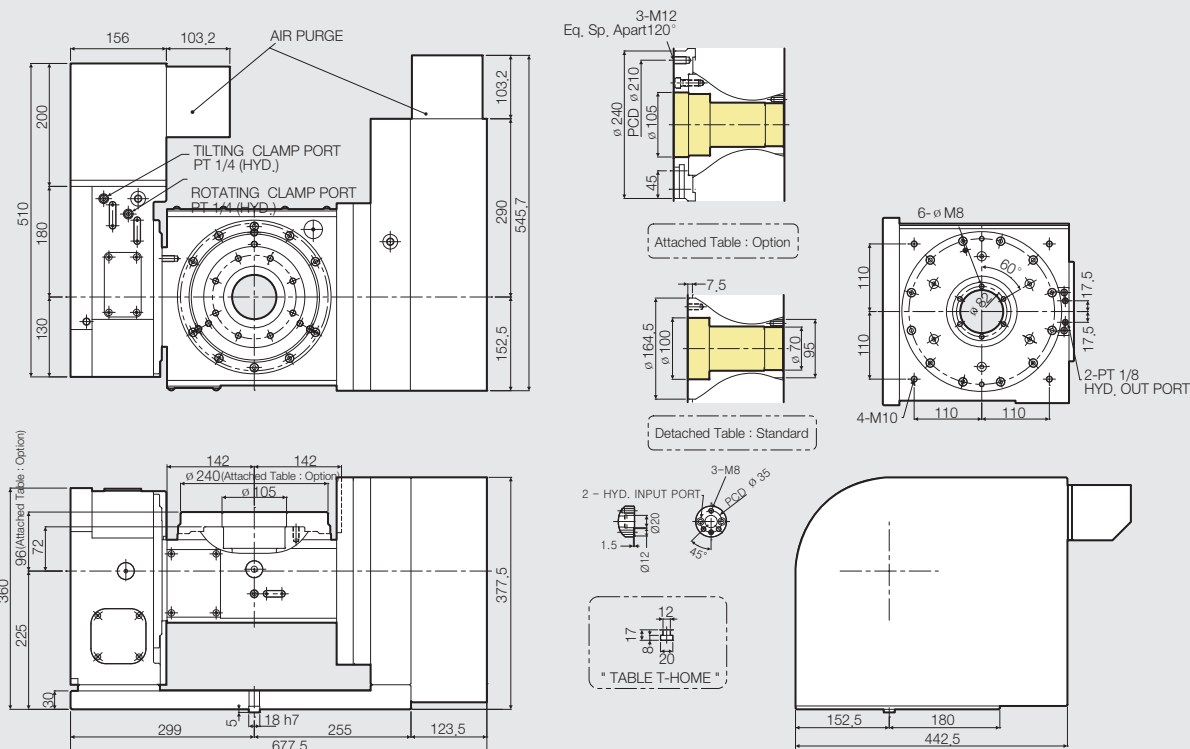
AC Servo Motor is ABSOLUTE Type

- F : FANUC
- S : SIEMENS
- M : MITSUBISHI
- P : PANASONIC
- Y : YASKAWA
- H : HEIDENHAIN
- L : LS MECAPION
- SY : SANYO
- FA : FAGOR
- O : OKUMA

Table Dia. [mm]	Center Height [mm]	Resister Dia.on Face Plate [mm]	Spindle Through Hole Dia. [mm]	Clamp Method	Allowable Work Inertia [kgm ²]	Net Weight [kg]	
(Table: Option) Ø240	225	Ø100H7	Ø70H8	Hydraulic Max. 35bar	0.78	295	
		Max. Spindle Speed [mm ⁻¹]	Gear Ratio	Repeatability Accuracy [sec]	Indexing Accuracy [sec]	Clamp Togue [N·m]	Servo Motor [FANUC]
Rotating Axis		33.3	1/90	4	30	900	ciF4 / 4000
Tilting Axis		16.6	1/180	4	60	1200	ciF4 / 4000
Allowable Load					Allowable Cutting Torque	Moment Of Tilting Weight	
Horizontal [kg]	Vertical [kg]	F [kN]	F x L [N·m]	F x L [N·m]	[N·m]	W x L [kgf·m]	
 100	 60	 12	 1200	 900	 600	 26	

TR-250FF

Tilting Range : -20° ~ 110°



TR-320FF

4th, 5th Axis for Tilting NC Rotary Table



- Tilting Series
- High Precision, High Speed Systems
- Convenient JIG Design
- Extremely Rigid Body
- High Clamping power (Hydraulic)

TR-SERIES

Model No.

TR-320FF

Servo Motor Maker

Table Diameter

TYPE : Tilting NC Rotary Table

* Servo Motor Brand

AC Servo Motor is ABSOLUTE Type

F : FANUC
 S : SIEMENS
 M : MITSUBISHI
 P : PANASONIC
 Y : YASKAWA
 H : HEIDENHAIN
 L : LS MECAPION
 SY : SANYO
 FA : FAGOR
 O : OKUMA

Table Dia. [mm]	Center Height [mm]	Resister Dia.on Face Plate [mm]	Spindle Through Hole Dia. [mm]	Clamp Method	Allowable Work Inertia [kgm ²]	Net Weight [kg]
(Table: Option) Ø320	242	Ø130H7	Ø105H8	Hydraulic Max. 35bar	-	410
	Max. Spindle Speed [mm ⁻¹]	Gear Ratio	Repeatability Accuracy [sec]	Indexing Accuracy [sec]	Clamp Togue [N·m]	Servo Motor [FANUC]
Rotating Axis	25	1/120	4	30	-	aiF8 / 3000
Tilting Axis	25	1/120	8	60	-	aiF12 / 3000
Allowable Load					Allowable Cutting Torque	Moment Of Tilting Weight
Horizontal [kg]	Vertical [kg]	F [kN]	F x L [N·m]	F x L [N·m]	[N·m]	W x L [kgf·m]
150	100	13.5	-	-	-	-

TR-320FF

Tilting Range : -20° ~ 110°

