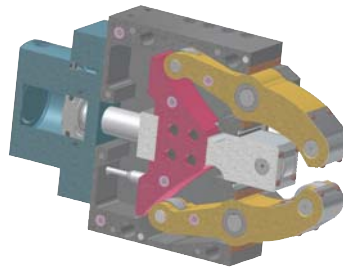


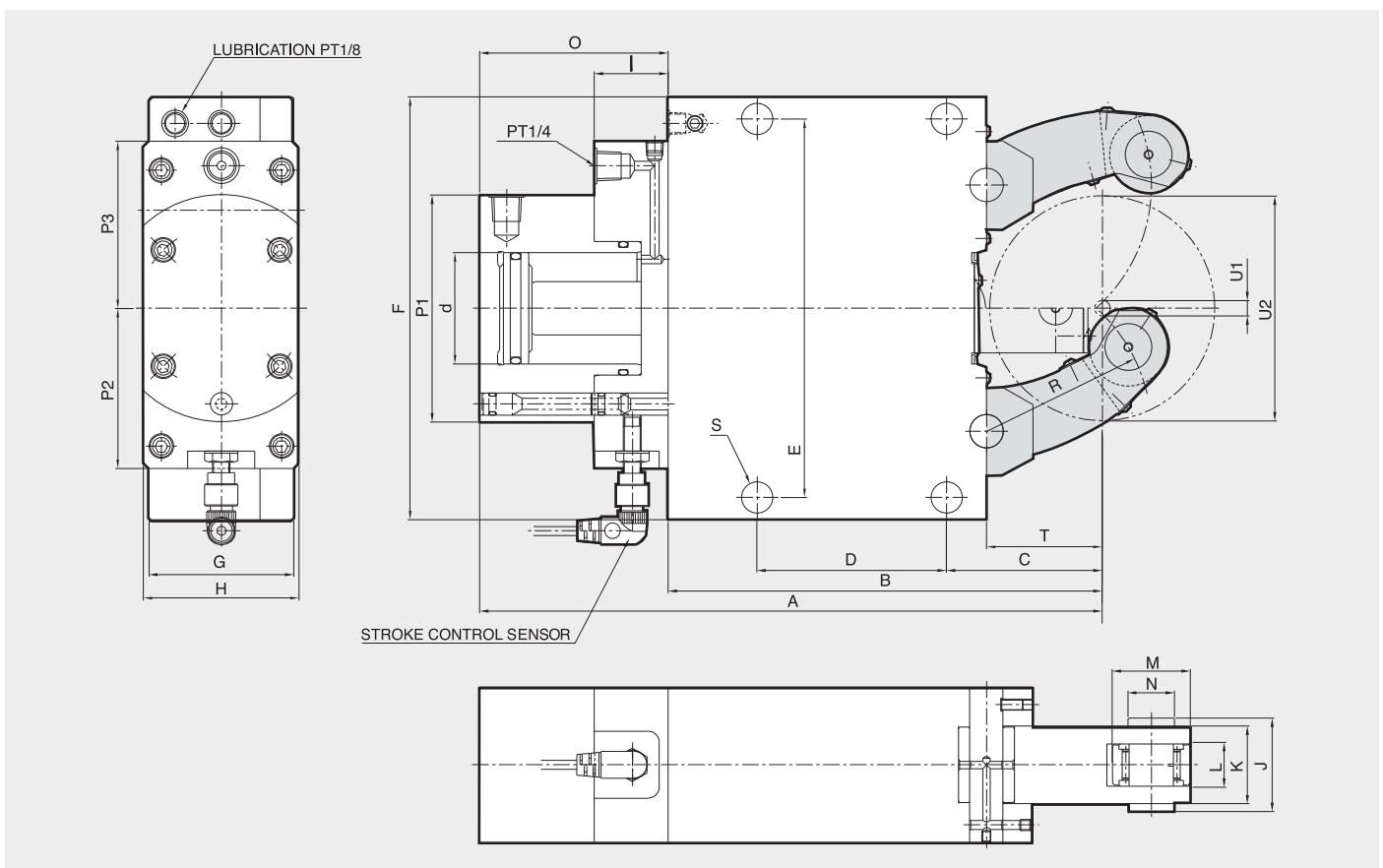
STA

Self-Centering Steady Rest

- Improves machining accuracy by supporting unstable, heavy or long workpieces
- The arms and center rollers are interconnected and designed to self-adjust to various size workpieces
- The mechanical design improves durability by eliminating the need for springs



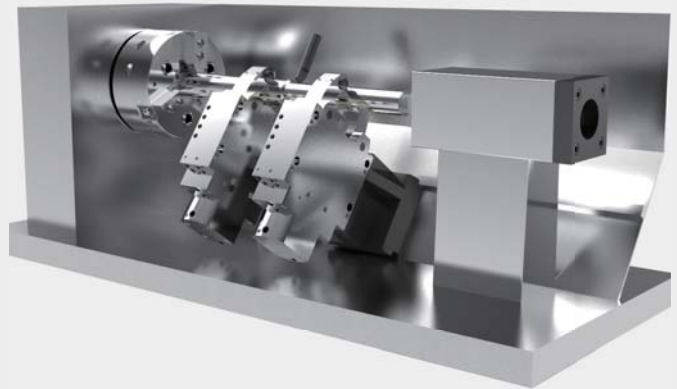
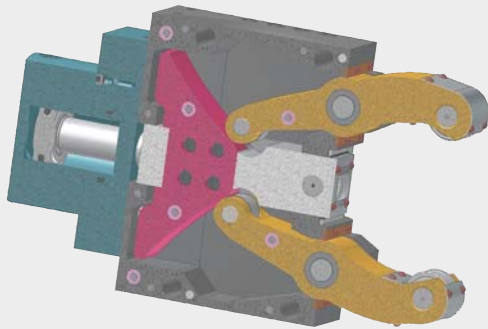
STEADY REST



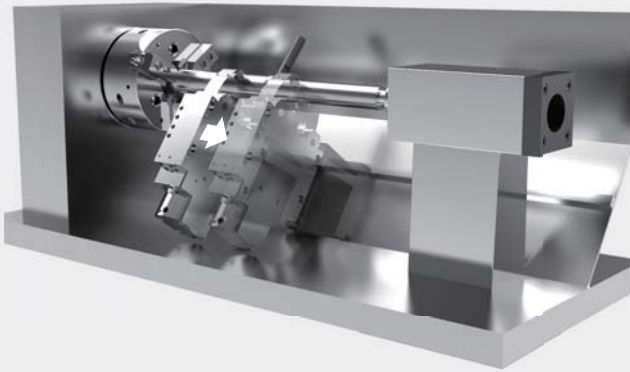
Dimensions

	A	B	C	D	E	F	G	H	I	J	K	L	M	N	O	P1	P2	P3	R	S	T	U1	U2
STA-1	207	137	51	64	118	132	55	70	33	24	20	12	19	6	70	84	66	66	50.5	11	37	4	64
STA-2	279.5	195	70	85	170	190	70	70	33	42	35	19	35	21	84.5	102	72	75	74	14	52	8	101
STA-3	431	312	115	135	262	290	85	100	37	52	45	25	47	25	120	137	90	100	119	18	85	11	152
STA-3.1	440	320	123	135	262	290	85	100	37	52	45	25	47	25	120	137	90	100	124	18	93	20	165
STA-3.2	455	335	138	135	262	290	85	100	37	52	45	25	47	25	120	137	90	100	139	18	103	50	220
STA-4	608	448	146	240	365	400	110	144	37	67	60	25	52	32	160	165	102	110	172	23	128	35	245
STA-5	697.5	510	178	270	400	440	145	144	37	83	75	29	62	36	187.5	165	102	110	209	23	160	45	310
STA-5.1	717.5	530	198	270	400	440	145	144	37	83	75	29	62	36	187.5	165	102	110	229	23	180	85	350
STA-6	944.5	709	215	330	640	680	145	158	37	83	75	29	80	42	235.5	190	115	130	290	27	175	125	460

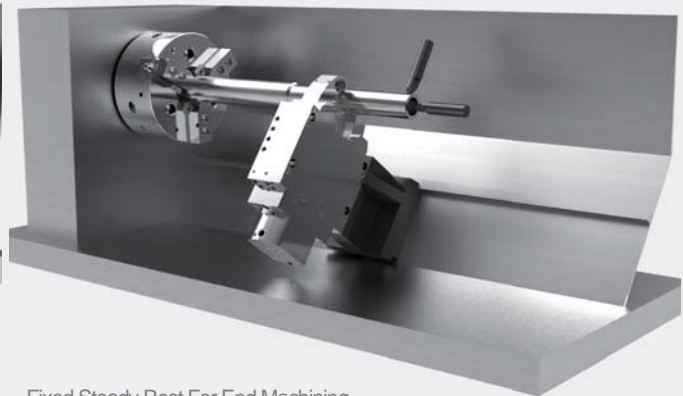
Fixed or Travelling Applications



Fixed Tandem Steady Rest



Travelling Steady Rest



Fixed Steady Rest For End Machining

Specifications

Type	Piston Area [cm ²]	Max. Clamping Force /Roller [kgf]	Operation Pressure		Centering Range		Max. Roller Surface Speed [m/min]	Centering Accuracy [mm]	Repeatability Accuracy [mm]	Weight [kg]
			Max.	Min.	Max.	Min.				
STA-1	7	100	50	6	64	4	800	0.02	0.005	6
STA-2	19.6	450	70	8	101	8	800	0.02	0.005	14
STA-3	50	1000	60	8	152	12	725	0.04	0.007	39
STA-3.1	50	1000	60	8	165	20	725	0.04	0.007	40
STA-3.2	50	1000	60	8	200	50	725	0.04	0.007	43
STA-4	78	1500	60	8	245	30	715	0.05	0.007	92
STA-5	78	2000	80	8	310	45	700	0.06	0.01	152
STA-5.1	78	2000	80	8	350	85	700	0.06	0.01	155
STA-6	132	3000	70	8	460	125	700	0.06	0.01	420