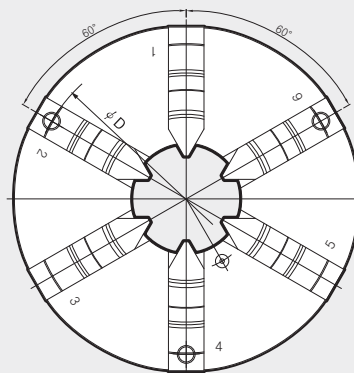
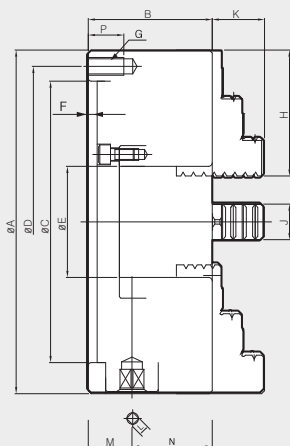


6-Jaw Scroll Chuck (Hard Jaws)

- 6-jaw scroll chuck with Solid jaw (incl. Internal and External hard jaws)

SCROLL CHUCK



Dimensions

	ΦA	B	ΦC(H6)	ΦD	ΦE	F	G	H	J	K	L	M	N	P
SCS-230(9°)	232	84	190	210	75	6	3-M12	85	24	35.04	12	29.5	54.5	25
SCS-273(10°)	273	86	230	250	89	6	3-M12	98	28	40.02	12	31.5	54.5	25
SCS-310(12°)	310	96	260	285	100	7	3-M12	110	30	45.08	14	31.5	64.5	25

Specifications

Type	Max. Static Gripping Force	Clamping Range		Handle Torque	Max. r.p.m.	Weight	GD ²
	[kN(kgf)]	External [φmm]	Internal [φmm]	[N·m(kgf·m)]	[min ⁻¹]	[kgf]	[N·m ² (kgf·m ²)]
SCS-230(9°)	37(3773)	5-200	62-210	147(15.0)	2900	24	6.27(0.64)
SCS-273(10°)	46(4691)	5-260	70-250	176.5(18.0)	2500	32	9.90(1.01)
SCS-310(12°)	55(5608)	10-300	86-290	206(21.0)	2200	45	23.0(2.35)

※ Specifications are subject to change without notice.