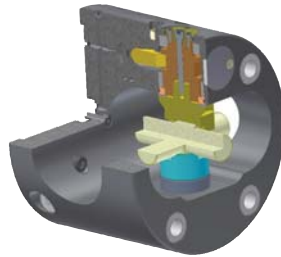


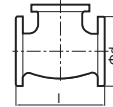
# IAH

## Auto-Indexing Chuck

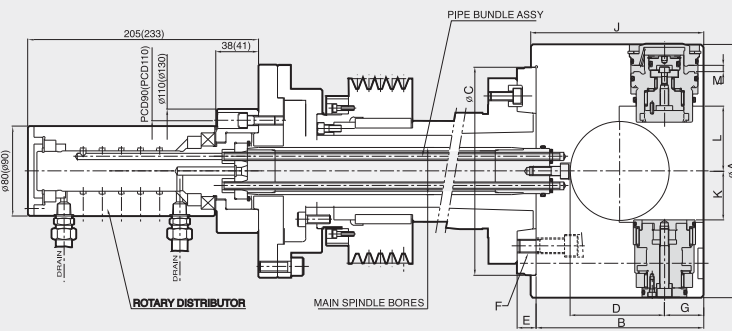
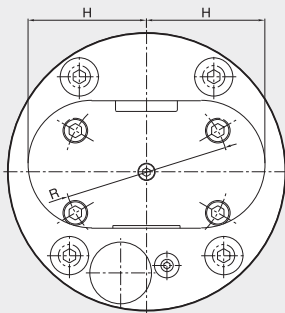
- Machine multiple surfaces in a single clamping
- On-the-fly indexing
- Accurate, durable indexing system
- Index positions 4 x 90° or 8 x 45°



### SPECIAL CHUCK



	Max. Workpiece Size	
	Φd [mm]	l [mm]
IAH-225	60	100
IAH-250	65	160
IAH-275	80	220
IAH-315	100	230
IAH-350	135	240
IAH-400	170	260
IAH-500	220	310
IAH-670	300	400



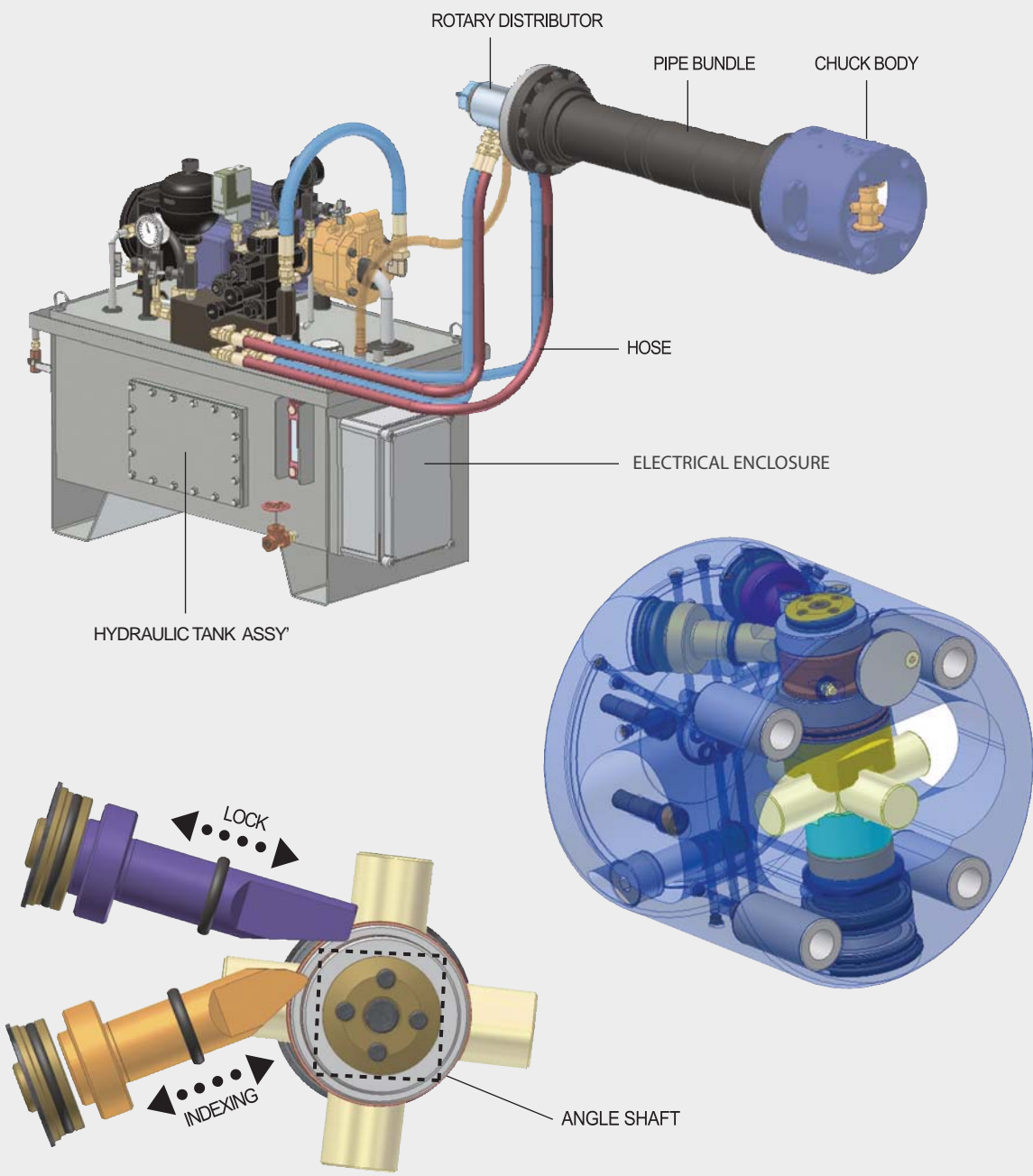
■ bracketed dimensions refer to models IAH-400 and larger.

#### Dimensions

	ΦA	B	ΦC(h7)	D	E	F	G	H	J	K	L	M	ΦR
IAH-225	225	149	185	84	25	M12	35	95	154	46	58	11.5	133.4
IAH-250	250	185	210	113	25	M12	40	106	190	46	55	20	133.4
IAH-275	280	208	210	125	25	M16	48	125	213	57	67	20.5	171.4
IAH-315	315	227	235	136	25	M16	50	136	232	70	85	22	171.4
IAH-350	350	235	290	148	30	M20	50	145	240	84	102	23	235
IAH-400	400	253	290	160	30	M20	60	165	259	100	114	30	235
IAH-500	500	301	380	200	35	M20, M24	68	205	308	133	157	35	235
IAH-670	670	465	380	286	40	M24	90	275	470	176	214	40	330.2

#### Specifications

Type	Max. Clamping Force	Main Spindle Bore	Max. Speed	Weight	GD <sup>2</sup>	Max. Workpiece Size	
	[kgf]					[mm]	[mm]
IAH-225	1270	OVER 45	2800	29	0.9	60	100
IAH-250	1730		2400	44	1.7	65	160
IAH-280	2550		2000	56	2.8	80	220
IAH-315	2550		1800	75	5.0	100	230
IAH-350	2550	OVER 55	1800	100	8.0	135	240
IAH-400	3530		1200	145	15.0	170	260
IAH-500	4670		900	230	25.4	220	310
IAH-670	5890		600	540	32.5	300	400



Work Pieces

