

# COR

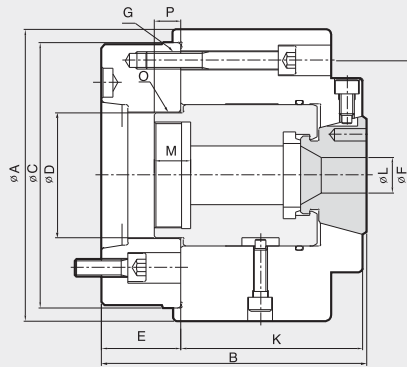
## Outside-Collet Chuck

- Quick change rubber -steel segment collet
- Ideal for bar and shaft clamping
- Round, square and hexagonal collets available

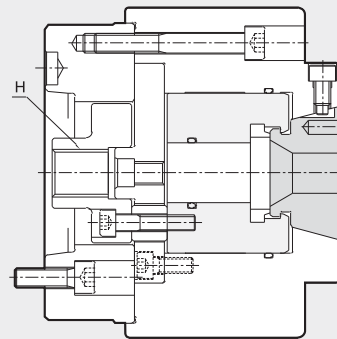


**SPECIAL CHUCK**

Special Chuck



Bar Work



Chucking work

### Dimensions

	ΦA	B	ΦC(h7)	ΦD	E	ΦF	G	H	K	ΦLmax.	ΦLmin.	M	O	Pmax.	Pmin.
COR-32	165	150	150	71	45	130	M10	M24	103	32	5	20.5	M60x2.0	16.5	13.5
COR-50	165	150	150	87	45	130	M10	M24	103	50	12	27.5	M74x1.5	23	20
COR-65	180	170	170	103	49	150	M12	M30	119	65	16	25	M90x2.0	25.5	22.5
COR-90	210	190	170	103	55	150	M12	M30	133	90	30	25	M90x2.0	28.5	22.5

### Specifications

Type	Max. Clamping Force [kgf]	Max. Drawbar Pull [kgf]	Collect Expansion [mm]	Plunger Stroke [mm]	Chucking Dia.		Max. Speed [r.p.m.]	Weight [kg]
					Bar Work	Chuck Work		
COR-32	6400	3200	1.0	3	5-32	7-32	4500	25
COR-50	8200	4100	1.0	3	12-50	12-50	4500	25
COR-65	9200	4600	1.0	3	16-65	16-65	4000	32
COR-90	13300	6500	2.0	6	30-90	30-90	3500	38