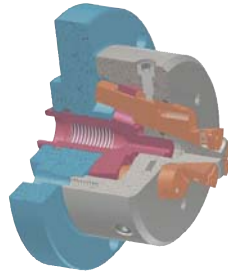


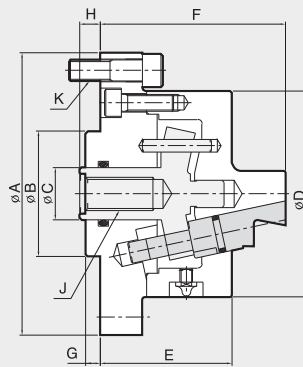
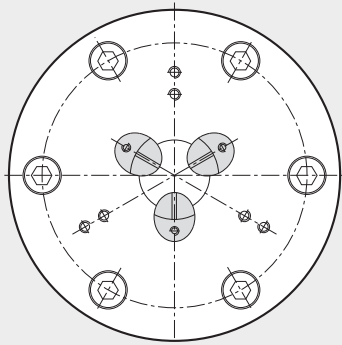
PIL

Inside Pin Arbor Chuck

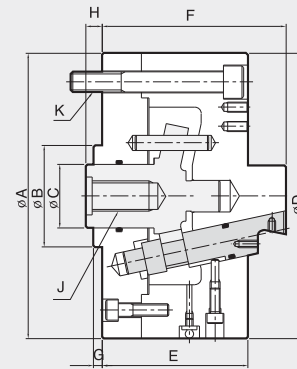
- Ideal for second operation I.D. gripping
- Active pull-down for high precision
- Counter-centrifugal gripping reduces distortion



SPECIAL CHUCK



PIL-25,35



PIL-55,75,100

Dimensions

	ΦA	$\Phi B(h7)$	ΦC	ΦD	E	F	G	Hmax.	Hmin.	J	K
PIL-25	135	60	20	85	60	80	7	12	8	M12	3-M10 PCD118
PIL-35	135	60	25	100	63	88.5	7	12	8	M16	3-M10 PCD118
PIL-55	190	80	32	190	93	120	7	18	8	M16	3-M16 PCD150
PIL-75	225	80	50	225	115	145	7	18	8	M24	6-M16 PCD180
PIL-100	270	120	50	270	130	170	7	23	13	M24	6-M16 PCD180

Specifications

Type	Max. Clamping Force	Max. Drawbar Pull	Jaw Stroke Dia.	Plunger Stroke	Clamping Range		Max. Speed	Weight	GD ²
	[kgf]	[kgf]	[mm]	[mm]	Pin Jaw	Top Jaw	[r.p.m.]	[kg]	[kgf·m ²]
PIL-25	2250	1200	1.7	4	17-25	-	5000	3.5	0.013
PIL-35	3380	1800	1.7	4	25-40	48-60	4500	4.3	0.026
PIL-55	5640	3000	4.2	10	35-55	62-90	3500	18.4	0.33
PIL-75	7150	3800	4.2	10	55-76	85-130	2500	35	0.88
PIL-100	7150	3800	4.2	10	80-110	120-180	2000	55	2.0