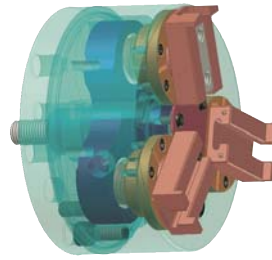


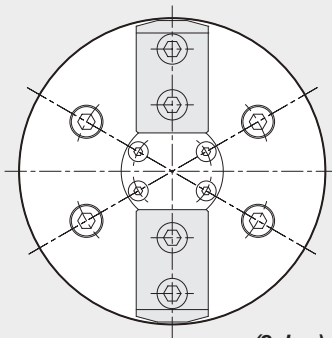
PBL

Universal Ball-Lock Power Chuck

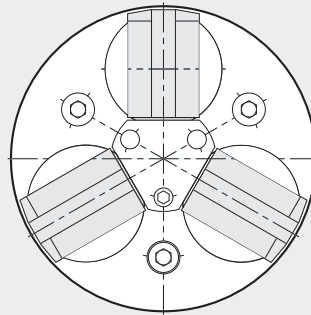
- Castings or forgings can be O.D. or I.D. clamped
- Grips on taper up to 10°
- Jaws pivot up to 5° to grip on uneven surfaces
- Ideal for shaft machining
- Active pull-down for high precision



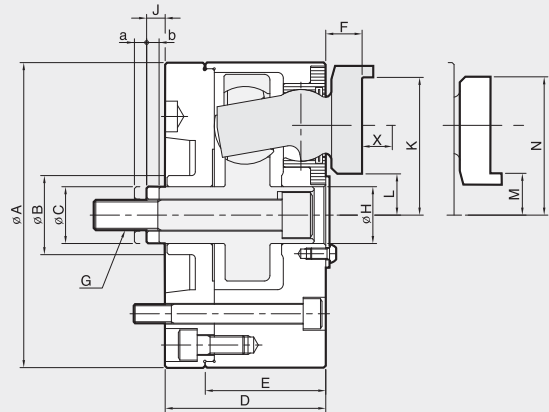
SPECIAL CHUCK



(2-Jaw)



(3-Jaw)



Dimensions

	ΦA	ΦB min.	ΦC	D	E	F	G	ΦH	J	a	b	K	L	M	N	X
PBL-06	162	40	30.16	85.2	59.2	19.3	M16	30.170	10.6	5.1	6.2	73.15	20.3	22.1	75	24.9
PBL-08	200	45	31.75	100	70	23.3	M16 (M18)	31.760	10.4	8	6.4	88.95	25.3	25.35	89	29.4
PBL-10	254	58	41.27	118	86.6	29.1	M18 (M22)	41.285	13.5	8	9.5	112.7	30.2	30.3	112.8	36.5
PBL-12	300	58	41.27	118	86.6	29.1	M18 (M22)	41.285	13.5	8	9.5	133.27	50.87	50.77	133.37	36.5
PBL-15	381	83	57.16	131	96.1	32.4	M24 (M27)	57.160	24.7	10.3	12	171.45	65.8	69.8	175.46	41.9
PBL-18	457	120.7	88.9	131	96.1	32.4	M30	88.900	31.7	10.3	12	209.55	103.9	107.9	213.6	41.9
PBL-21	533	120.7	88.9	131	96.1	32.4	M30	88.900	31.7	10.3	12	247.65	142	146	252	41.9
PBL-24	610	-	80	131	100.9	32.4	M30	88.900	31.7	10.3	12	285.8	180.2	184.2	289.81	41.9

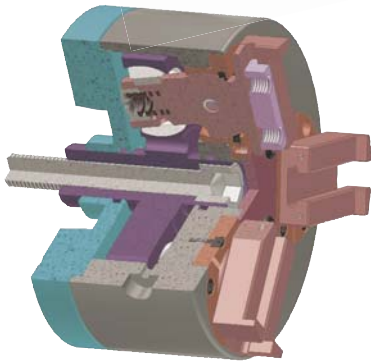
Specifications

Type	Max. Clamping Force	Max. Drawbar Pull	Jaw Stroke Dia.	Plunger Stroke	Clamping Range		Max. Speed	Weight	GD ²
	[kgf]	[kgf]	[mm]	[mm]	Outside Dia.	Inside Dia.	[r.p.m.]	[kg]	[kgf·m ²]
PBL-06	6600	2200	7.9	11.3	12.7-120	70-152	4000	18.0	0.15
PBL-08	8700	*2900	9.5	14.3	16-152	76-203	3500	27.0	0.48
PBL-10	10800	*3600	12.7	17.5	50-203	85-235	2500	45.0	1.23
PBL-12	10800	*3600	12.7	17.5	63-241	127-305	2000	67.5	2.42
PBL-15	16500	*5500	15.8	22.3	76-317	165-381	1800	84.5	8.49
PBL-18	16500	5500	15.8	22.3	89-394	241-457	1500	120.0	15.17
PBL-21	16500	5500	15.8	22.3	162-470	317-533	1000	180.0	25.00
PBL-24	16500	5500	15.8	22.3	180-520	350-600	1000	290	25

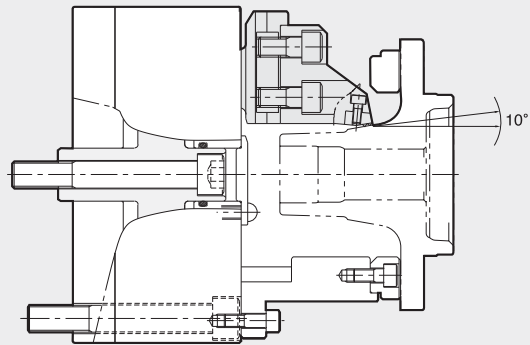
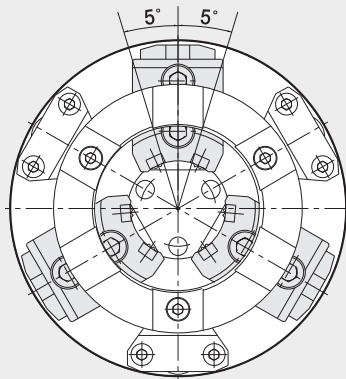
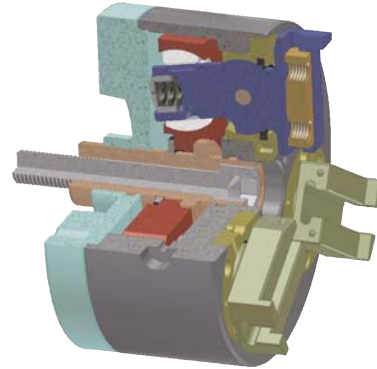
※ * When "G" applies to () specification, "Max. Drawbar Pull" has the above specification.



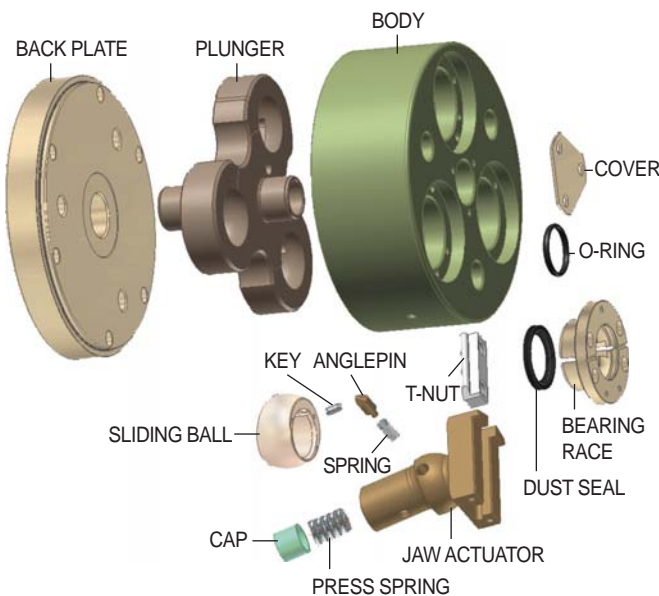
Centralizing



Compensating



PBL Components



Inserts

