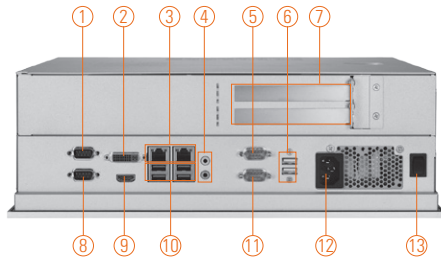
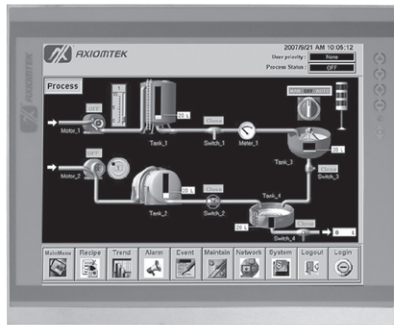


# P1157E-871

15" XGA TFT Intel® Core™ i family/ Pentium®/ Celeron® Expandable Industrial Panel Computer with 2 PCIe or 2 PCI Slots



- |   |                                 |                    |
|---|---------------------------------|--------------------|
| 1. COM 1 with 5V & 12V (RS-232/422/485) | 5. COM 3 with 5V & 12V (RS-232) | 10. USB 3.0 x 4    |
| 2. DVI-I                                | 6. USB 2.0 x 2                  | 11. COM 4 (RS-232) |
| 3. Ethernet x 2                         | 7. PCIe x8 x 2 or PCI x 2       | 12. AC plug        |
| 4. Audio (MIC-in/Line-out)              | 8. COM 2 (RS-232)               | 13. Power switch   |
|   | 9. HDMI                         |                    |



## Introduction

The P1157E-871 is a multimedia touch panel PC for kiosk application. It has a fashionable mechanism design and industrial-grade material front bezel which can avoid damage from chemical corrosion. To meet the demands of multimedia application, the P1157E-871 is powered by a high performance LGA1155 socket 3rd & 2nd Generation Intel® Core™ i7/ i5/ i3/ Pentium®/ Celeron® processors with the Intel® C216 Express chipset. It features four COM ports, two gigabit Ethernet and up to 16 GB memory of dual-channel DDR3 that delivers high computing capability for high performance-demanding applications. The industrial panel PC is most suitable for kiosk, factory and automation.

### Dual Monitor Display

The P1157E-871 supports DVI and HDMI simultaneously that features the use of dual display devices for increasing the area available for programs running on a single computer system. It not only increases larger screen viewing but also improves personal productivity.

### Expandable for 2 PCIe or 2 PCI

The P1157E-871 has 2 PCIe x8 or 2 PCI slots for expansion purpose. User can easily plug in standard half-size PCI or PCIe card for any requirement.

### Speaker and WLAN Antenna Supported

The P1157E-871 features built-in speakers for kiosk application to display multimedia content program. It also supports WLAN module antenna (optional) for wireless network connectivity.

### Friendly Less Screw Design

Removing the back cover to maintain the system in unscrewing 3 screws only that saving your time and increasing our work efficiency many times.

## Features

- 15" XGA TFT LCD display
- High performance system supporting LGA1155 socket 3rd & 2nd Generation Intel® Core™ i7/ i5/ i3/ Pentium®/ Celeron® processors
- Intel® C216 chipset
- Easy installation: a less screw design for user's convenience
- 4 USB 3.0, 2 USB 2.0 and 4 COM ports
- Flexible expansion interface (two PCIe x8 or two PCI slots)
- Built-in speakers and optional Wi-Fi 802.11 b/g/n module
- Robust aluminum with IP 65 compliant front bezel design



▲ Side view

## Specifications

Front Bezel	Aluminum w/ IP65/NEMA 4 rugged protection		
LCD Panel	Display Type	15" XGA TFT LCD	
	Brightness	350 nits	
	Resolution	1024 x 768 pixels	
	Viewing Angle	160°/140°	
Main System	CPU	LGA1155 socket 3rd & 2nd Generation Intel® Core™ i7/ i5/ i3/ Pentium®/ Celeron® processors	
	Chipset	Intel® C216	
	System Memory	2 x 204-pin DDR3 SO-DIMM max. up to 16 GB	
	BIOS	AMI UEFI BIOS with OA 3.0 built	
	Storage	1 x 3.5" or 2 x 2.5" SATA HDD	
	Drive	1 x builtin slim DVD-RW (optional)	
	Watchdog Timer	255 levels, 1~255 sec.	

\* All specifications and photos are subject to change without notice.

## Specifications

IO Connector	2 x RS-232 (COM 2 & COM 4) 1 x RS-232/422/485 with 5V & 12V (COM 1) 1 x RS-232 with 5V & 12V (COM 3) 1 x DVI-I 1 x HDMI 4 x USB 3.0 2 x USB 2.0 2 x 10/100/1000 Mbps Ethernet 1 x Audio (Mic-in/Line-out)
Expansion Interface	2 x PCIe x8 or 2 x PCI
Touchscreen	5-wire resistive type Light transmission 79% 1 million activations (typical) at a single point
Power Supply	100 ~ 240VAC, 270W
Dimensions	378 mm (14.88") (W) x 125.5 mm (4.94") (D) x 309 mm (12.17") (H)
Packing Dimension	610 mm (24.02") (W) x 260 mm (10.24") (D) x 590 mm (23.23") (H)
Weight(net/gross)	6.2 kg (13.67 lb)/ 9.6 kg (21.16 lb)
Environment	Operating Temperature: 0° ~ +45°C (+32°F ~ +113°F) Storage Temperature: -20°C ~ +65°C (-4°F ~ +149°F) Relative humidity: 10 ~ 95%@40°C, non-considering Operating vibration: 1.0 G, 5-500Hz, random
Certification	CE

## Ordering Information

P1157E-871 w/ PCIe	15" XGA TFT Intel® Core™ i7/ i5/ i3/ Celeron® / Pentium® / Xeon® expandable industrial touch panel computer with 2 PCIe x8 slots
P1157E-871 w/ PCI	15" XGA TFT Intel® Core™ i7/ i5/ i3/ Celeron® / Pentium® / Xeon® expandable industrial touch panel computer with 2 PCI slots

\* Specification and certifications are based on options and may vary.

## Optional Accessories

82211271000E	Wireless LAN kit
8211570100E	VESA & WALL mount kit
8211570060E	Rack mount kit
72211571000E	2 x 2.5" HDD Bracket
82211570070E	P1157E-871 DVD-RW Ki

## Optional OS Installation

Windows® 7
Windows® Vista
Windows® XP
Windows® Embedded 8

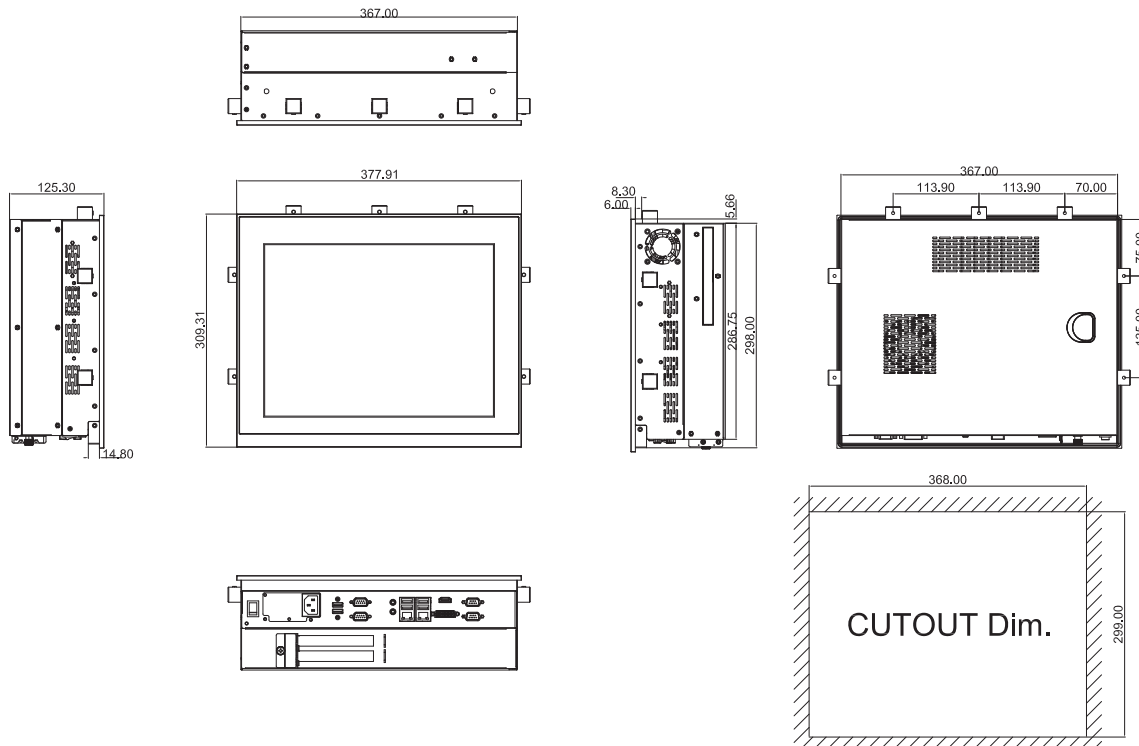


▲ Expandable design



▲ Less screw design

## Dimensions



\* All specifications and photos are subject to change without notice.  
© 2014 Axiomtek Co., Ltd. All rights reserved.