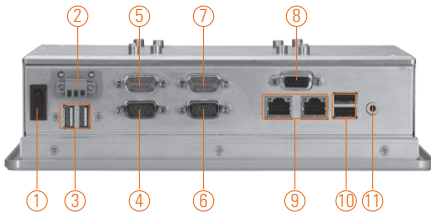
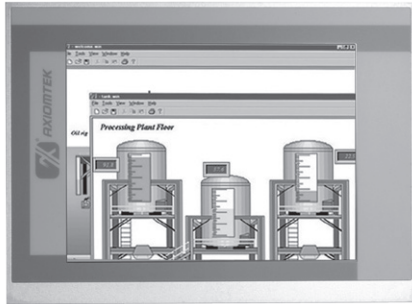


GOT3846T-832

8.4" SVGA TFT Fanless Touch Panel
Computer with Intel® Atom™ Processor
(-20°C +55°C)



- | | |
|---------------------------|----------------------|
| 1. Power switch | 6. COM 2 (RS-232) |
| 2. DC power input | 7. COM 4 (RS-232) |
| 3. USB 2.0 x 2 | 8. VGA |
| 4. COM 1 (RS-232/422/485) | 9. Ethernet x 2 |
| 5. COM 3 (RS-232) | 10. USB 2.0 x 2 |
| | 11. Audio (Line-out) |



Introduction

The GOT3846T-832 is the 8.4" fanless touch panel computer. By supporting a wide temperature range from -20°C ~ +55°C, it is especially designed for harsh environments. The GOT3846T-832 adopts a modern, super sleek fanless design, is equipped with a 8.4" TFT LCD, and low power consumption Intel processor. In response to customer's requests for wireless applications, the GOT3846T-832 has a Mini card slot and an optional fixed rotational WLAN antenna for wireless network connection. By just plugging in the Mini card WLAN card, customers have instant access wireless LAN. The GOT3846T-832 is used extensively for variety of industry needs including transportation, packing field surveillance, building automation, and more.

Wide-temperature (-20°C ~ +55°C) supported

The GOT3846T-832 adopts unique extended temperature technology, with a temperature range from -20°C ~ +55°C, with a fanless cooling system and compact design for harsh environments.

WLAN antenna supported (optional)

The GOT3846T-832 provides a Mini card slot and an optional fixed rotational WLAN antenna for wireless network connections. By simply plugging in the wireless LAN card, customers can use the unit in a wireless environment.

Anti-vibration up to 1G

With a special vibration-resistant design patent, GOT3846T-832 can work well under 1G (5-500Hz) in operation mode, and equipped with a 2.5" HDD.

Features

- 8.4" SVGA (800 x 600) color TFT LCD display
- Fanless design with Intel® Atom™ processor N2600 1.6 GHz
- Supports wide temperature range of -20°C ~ +55°C
- Aluminum front bezel & chassis
- Supports WLAN module & external antenna
- Supports 2 Giga LAN, 4 USB 2.0 & 4 COM ports
- Supports panel mount, wall mount, VESA arm, desktop stand (optional)



▲ Side view



▲ Rear view

Specifications

Front Bezel	IP65, NEMA 4 rugged protection, aluminum front bezel		
LCD Panel	Display Type	8.4" SVGA TFT LCD	
	Brightness (cd/m ²)	450 nits	
	Resolution	800 x 600	
	View Angle (H/V)	160°/140°	
Main System	CPU	Intel® Atom™ processor N2600 1.6 GHz	
	Chipset	Intel® NM10 Express	
	System Memory	1 x 204-pin DDR3 800 SO-DIMM max. up to 2 GB	
	BIOS	AMI UEFI BIOS	
	Storage	1 x 2.5" SATA HDD	
		1 x CompactFlash™ (optional)	
	Watchdog Timer	255 levels, 0-255 sec.	
	Onboard Graphics	Integrated Intel® GFX	

Specifications

I/O Connector	3 x RS-232 (COM 2/3/4) 1 x RS-232/422/485 (COM 1) 1 x VGA 1 x Audio (Line-out) 4 x USB 2.0 2 x 10/100/1000Mbps Ethernet
Expansion Interface	1 x PCIe Mini Card
Touchscreen	Resistive type
Power Supply	10-30VDC (phoenix type)
Dimensions	248 mm (9.76") x 58.3 mm (2.29") x 183 mm (7.2")
Packing Dimensions	390 mm (15.35") x 190 mm (7.48") x 430 mm (16.92")
Weight (net/gross)	3.4 kg (7.49 lb)/5.8 kg (12.78 lb)
Environment	Operating temperature: -20°C ~ +55°C (-4°F ~ +131°F) (with W.T. DRAM/HDD/CF) Storage Temperature: -30°C ~ +80°C (-22°F ~ +176°F) Relative humidity: 10% ~ 95% @ 40°C; non-condensing Operation vibration: 1G, 5 ~ 500Hz, random for 2.5" HDD 2G, 5 ~ 500Hz, random for CompactFlash™
Certification	CE

* W.T.: Wide Temperature. All W.T. supported products have to be sorted by Axiomtek.

Ordering Information

GOT3846T-832	8.4" SVGA TFT fanless touch panel computer with Intel® Atom™ N2600 (-20°C ~ +55°C)
--------------	---

* Specification and certifications are based on options and may vary.

Optional EOS Installation

WES
Windows® Embedded Standard 7 (32-bit)

Optional OS Installation

Windows® XP
Windows® 7 (32-bit)

Overview

Industrial Panel
Computers &
Monitors

Heavy-duty
Fanless Touch
Panel Computers

Digital
Signage
Solutions

Healthcare
& Medical
Solutions

Open Frame
Panel
Computers

Accessories

Dimensions

