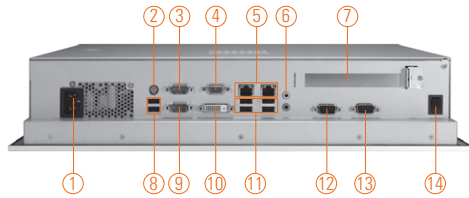
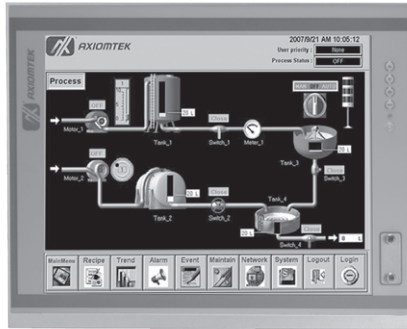


P1197E-861

19" SXGA TFT Intel® Core™ i7/ i5/ i3
Expandable Industrial Panel Computer with
1 PCI or 1 PCIe Slot

NEW



- | | | |
|-------------------------------|----------------------------|---------------------|
| 1. AC Plug | 6. Audio (Mic-in/Line-out) | 11. 4x USB2.0 |
| 2. PS2 Keyboard & Mouse combo | 7. 1x PCIe x 4 or 1 x PCI | 12. 1x RS-232(COM3) |
| 3. 1x RS-232/422/485 (COM1) | 8. 2x USB2.0 | 13. 1x RS-232(COM4) |
| 4. 1x VGA | 9. 1x RS-232(COM2) | 14. Power Switch |
| 5. Ethernet x2 | 10. 1x DVI-D | |



Introduction

The P1197E-861 is a multimedia touch panel PC for kiosk application. It has a fashionable mechanism design and industrial-grade material front bezel which can avoid damage from chemical corrosion. To meet the demands of multimedia application, the P1197E-861 is powered by a high performance LGA1155 socket 3rd & 2nd Generation Intel® Core™ i7/ i5/ i3/ Pentium®/ Celeron® processors with the Intel® H61 Express chipset. It features four COM ports, two gigabit Ethernet and up to 16 GB memory of dual-channel DDR3 that delivers high computing capability for high performance-demanding applications. The industrial panel PC is most suitable for kiosk, factory and automation.

Expandable for 1 PCIe or 1 PCI

The P1197E-861 has 1 PCIe x4 or 1 PCI slot for expansion purpose. User can easily plug in standard half-size PCI or PCIe card for any requirement.

Speaker and WLAN Antenna Supported

The P1197E-861 features built-in speakers for kiosk application to display multimedia content program. It also supports WLAN module antenna (optional) for wireless network connectivity.

SATA HDD Trays for Easy Maintenance

Without the complicated steps, users can maintain hard drive in 2 steps that make the work more efficiency.

Friendly Less Screw Design

Removing the back cover to maintain the system in unscrewing 3 screws only that saving your time and increasing our work efficiency many times.

Features

- 19" SXGA TFT LCD display
- High performance system supporting LGA1155 socket 3rd & 2nd Generation Intel® Core™ i7/ i5/ i3/ Pentium®/ Celeron® processors
- Intel® H61 chipset
- Easy installation: a less screw design for user's convenience
- 6 USB 2.0 (back), 2 USB 2.0 (front) and 4 COM ports
- Flexible expansion interface (PCIe x4 or PCI slot)
- Built-in speakers and optional Wi-Fi 802.11 b/g/n module
- Robust aluminum with IP 65 compliant front bezel design



▲ HDD easy maintenance

Specifications

Front Bezel	Aluminum w/ IP65/NEMA 4 rugged protection	
LCD Panel	Display Type	19" SXGA TFT LCD
	Brightness	350 nits
	Resolution	1280 x 1024 pixels
	Viewing Angle	80°/80°
Main System	CPU	LGA1155 socket 3rd & 2nd Generation Intel® Core™ i7/ i5/ i3/ Pentium®/ Celeron® processors
	Chipset	Intel® H61
	System Memory	2 x 204-pin DDR3 SO-DIMM max. up to 16 GB
	BIOS	AMI UEFI BIOS with OA 3.0 built
	Storage	2 x 2.5" SATA HDD
	Drive	1 x builtin slim DVD-RW (optional)
	Watchdog Timer	255 levels, 1-255 sec.

Specifications

IO Connector	3 x RS-232 (COM 2-4) 1 x RS-232/422/485 (COM 1) 1 x RS-232 with 5V & 12V (COM 3) 1 x DVI-D 1 x VGA 6 x USB 2.0 (back) 2 x USB 2.0 (front) 2 x 10/100/1000 Mbps Ethernet 1 x Audio (Mic-in/Line-out)
Expansion Interface	1 x PCIe x4 or 1 x PCI
Touchscreen	5-wire resistive type Light transmission 79% 1 million activations (typical) at a single point
Power Supply	100 ~ 240VAC, 270W
Dimensions	469 mm (18.46") (W) x 94.7 mm (3.73") (D) x 380.8 mm (14.99") (H)
Packing Dimension	615 mm (24.21") (W) x 250 mm (9.84") (D) x 585 mm (23.03") (H)
Weight(net/gross)	8 kg (17.64 lb)/ 10.4 kg (22.93 lb)
Environment	Operating Temperature: 0° ~ +45°C (+32°F ~ +113°F) Storage Temperature: -20°C ~ +65°C (-4°F ~ +149°F) Relative humidity: 10 ~ 95% @ 40°C, non-considering Operating vibration: 1.0G, 5-500Hz, random
Certification	CE

Ordering Information

P1197E-861 w/ PCIe	19" SXGA TFT Intel® Core™ i7/ i5/ i3/ Celeron®/ Pentium® expandable industrial touch panel computer with 1 PCIe x4 slot
P1197E-861 w/ PCI	19" SXGA TFT Intel® Core™ i7/ i5/ i3/ Celeron®/ Pentium® expandable industrial touch panel computer with 1 PCI slot

* Specification and certifications are based on options and may vary.

Optional OS Installation

Windows® 7
Windows® Vista
Windows® XP
Windows® Embedded 8



▲ Less screw design

Dimensions

