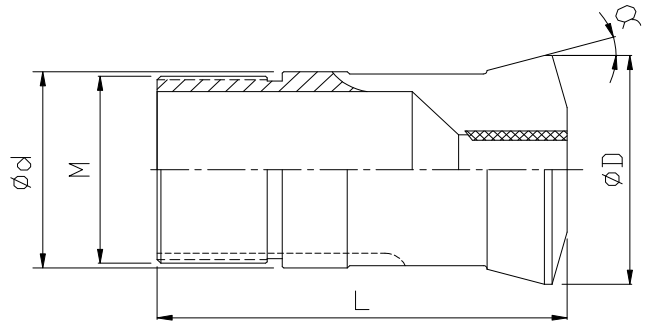


TORNOS #MR32

Dimensions Metric

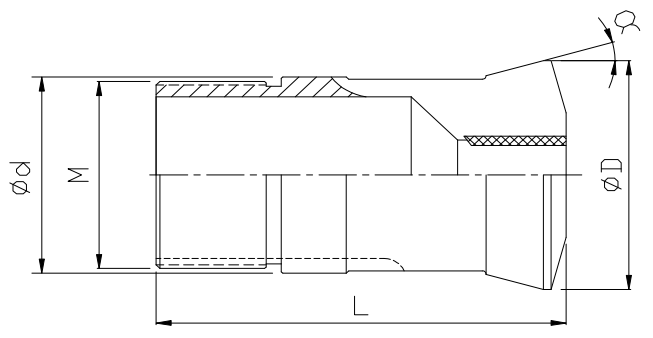
Specification:	d= 44.0		
	L=87.5		
	D=53.0		
α :	20°	Thread:	M40X1.0
Nann No.	3835E	Neukomm No.	27.001



Order No.	Product Title	Order No.	Product Title
5932R2.0	#MR32 Bushing Round 2.0m/m	5932R29.5	#MR32 Bushing Round 29.5m/m
5932R2.5	#MR32 Bushing Round 2.5m/m	5932R30.0	#MR32 Bushing Round 30.0m/m
5932R3.0	#MR32 Bushing Round 3.0m/m	5932R30.5	#MR32 Bushing Round 30.5m/m
5932R3.5	#MR32 Bushing Round 3.5m/m	5932R31.0	#MR32 Bushing Round 31.0m/m
5932R4.0	#MR32 Bushing Round 4.0m/m	5932R31.5	#MR32 Bushing Round 31.5m/m
5932R4.5	#MR32 Bushing Round 4.5m/m	5932R32.0	#MR32 Bushing Round 32.0m/m
5932R5.0	#MR32 Bushing Round 5.0m/m	Hexagon	
5932R5.5	#MR32 Bushing Round 5.5m/m	5932H3.0	#MR32 Bushing Hexagon 3.0m/m
5932R6.0	#MR32 Bushing Round 6.0m/m	5932H4.0	#MR32 Bushing Hexagon 4.0m/m
5932R6.5	#MR32 Bushing Round 6.5m/m	5932H5.0	#MR32 Bushing Hexagon 5.0m/m
5932R7.0	#MR32 Bushing Round 7.0m/m	5932H6.0	#MR32 Bushing Hexagon 6.0m/m
5932R7.5	#MR32 Bushing Round 7.5m/m	5932H7.0	#MR32 Bushing Hexagon 7.0m/m
5932R8.0	#MR32 Bushing Round 8.0m/m	5932H8.0	#MR32 Bushing Hexagon 8.0m/m
5932R8.5	#MR32 Bushing Round 8.5m/m	5932H9.0	#MR32 Bushing Hexagon 9.0m/m
5932R9.0	#MR32 Bushing Round 9.0m/m	5932H10.0	#MR32 Bushing Hexagon 10.0m/m
5932R9.5	#MR32 Bushing Round 9.5m/m	5932H11.0	#MR32 Bushing Hexagon 11.0m/m
5932R10.0	#MR32 Bushing Round 10.0m/m	5932H12.0	#MR32 Bushing Hexagon 12.0m/m
5932R10.5	#MR32 Bushing Round 10.5m/m	5932H13.0	#MR32 Bushing Hexagon 13.0m/m
5932R11.0	#MR32 Bushing Round 11.0m/m	5932H14.0	#MR32 Bushing Hexagon 14.0m/m
5932R11.5	#MR32 Bushing Round 11.5m/m	5932H15.0	#MR32 Bushing Hexagon 15.0m/m
5932R12.0	#MR32 Bushing Round 12.0m/m	5932H16.0	#MR32 Bushing Hexagon 16.0m/m
5932R12.5	#MR32 Bushing Round 12.5m/m	5932H17.0	#MR32 Bushing Hexagon 17.0m/m
5932R13.0	#MR32 Bushing Round 13.0m/m	5932H18.0	#MR32 Bushing Hexagon 18.0m/m
5932R13.5	#MR32 Bushing Round 13.5m/m	5932H19.0	#MR32 Bushing Hexagon 19.0m/m
5932R14.0	#MR32 Bushing Round 14.0m/m	5932H20.0	#MR32 Bushing Hexagon 20.0m/m
5932R14.5	#MR32 Bushing Round 14.5m/m	5932H21.0	#MR32 Bushing Hexagon 21.0m/m
5932R15.0	#MR32 Bushing Round 15.0m/m	5932H22.0	#MR32 Bushing Hexagon 22.0m/m
5932R15.5	#MR32 Bushing Round 15.5m/m	5932H23.0	#MR32 Bushing Hexagon 23.0m/m
5932R16.0	#MR32 Bushing Round 16.0m/m	5932H24.0	#MR32 Bushing Hexagon 24.0m/m
5932R16.5	#MR32 Bushing Round 16.5m/m	5932H25.0	#MR32 Bushing Hexagon 25.0m/m
5932R17.0	#MR32 Bushing Round 17.0m/m	5932H26.0	#MR32 Bushing Hexagon 26.0m/m
5932R17.5	#MR32 Bushing Round 17.5m/m	5932H27.0	#MR32 Bushing Hexagon 27.0m/m
5932R18.0	#MR32 Bushing Round 18.0m/m	Square	
5932R18.5	#MR32 Bushing Round 18.5m/m	5932S3.0	#MR32 Bushing Square 3.0m/m
5932R19.0	#MR32 Bushing Round 19.0m/m	5932S4.0	#MR32 Bushing Square 4.0m/m
5932R19.5	#MR32 Bushing Round 19.5m/m	5932S5.0	#MR32 Bushing Square 5.0m/m
5932R20.0	#MR32 Bushing Round 20.0m/m	5932S6.0	#MR32 Bushing Square 6.0m/m
5932R20.5	#MR32 Bushing Round 20.5m/m	5932S7.0	#MR32 Bushing Square 7.0m/m
5932R21.0	#MR32 Bushing Round 21.0m/m		

5932R21.5	#MR32 Bushing Round 21.5m/m	5932S8.0	#MR32 Bushing Square 8.0m/m
5932R22.0	#MR32 Bushing Round 22.0m/m	5932S9.0	#MR32 Bushing Square 9.0m/m
5932R22.5	#MR32 Bushing Round 22.5m/m	5932S10.0	#MR32 Bushing Square 10.0m/m
5932R23.0	#MR32 Bushing Round 23.0m/m	5932S11.0	#MR32 Bushing Square 11.0m/m
5932R23.5	#MR32 Bushing Round 23.5m/m	5932S12.0	#MR32 Bushing Square 12.0m/m
5932R24.0	#MR32 Bushing Round 24.0m/m	5932S13.0	#MR32 Bushing Square 13.0m/m
5932R24.5	#MR32 Bushing Round 24.5m/m	5932S14.0	#MR32 Bushing Square 14.0m/m
5932R25.0	#MR32 Bushing Round 25.0m/m	5932S15.0	#MR32 Bushing Square 15.0m/m
5932R25.5	#MR32 Bushing Round 25.5m/m	5932S16.0	#MR32 Bushing Square 16.0m/m
5932R26.0	#MR32 Bushing Round 26.0m/m	5932S17.0	#MR32 Bushing Square 17.0m/m
5932R26.5	#MR32 Bushing Round 26.5m/m	5932S18.0	#MR32 Bushing Square 18.0m/m
5932R27.0	#MR32 Bushing Round 27.0m/m	5932S19.0	#MR32 Bushing Square 19.0m/m
5932R27.5	#MR32 Bushing Round 27.5m/m	5932S20.0	#MR32 Bushing Square 20.0m/m
5932R28.0	#MR32 Bushing Round 28.0m/m	5932S21.0	#MR32 Bushing Square 21.0m/m
5932R28.5	#MR32 Bushing Round 28.5m/m	5932S22.0	#MR32 Bushing Square 22.0m/m
5932R29.0	#MR32 Bushing Round 29.0m/m		

TORNOS #MR32			
Dimensions inches			
Specification:	d= 1.732"		
	L=3.445"		
	D=2.087"		
α :	20°	Thread:	M40X1.0
Nann No.	3835E	Neukomm No.	27.001



Order No.	Product Title
5932R0.0781	#MR32 Bushing Round .0781" (5/64")
5932R0.0938	#MR32 Bushing Round .0938" (3/32")
5932R0.1094	#MR32 Bushing Round .1094" (7/64")
5932R0.1250	#MR32 Bushing Round .1250" (1/8")
5932R0.1406	#MR32 Bushing Round .1406" (9/64")
5932R0.1562	#MR32 Bushing Round .1562" (5/32")
5932R0.1719	#MR32 Bushing Round .1719" (11/64")
5932R0.1875	#MR32 Bushing Round .1875" (3/16")
5932R0.2031	#MR32 Bushing Round .2031" (13/64")
5932R0.2188	#MR32 Bushing Round .2188" (7/32")
5932R0.2344	#MR32 Bushing Round .2344" (15/64")
5932R0.2500	#MR32 Bushing Round .2500" (1/4")
5932R0.2656	#MR32 Bushing Round .2656" (17/64")
5932R0.2812	#MR32 Bushing Round .2812" (9/32")
5932R0.2969	#MR32 Bushing Round .2969" (19/64")
5932R0.3125	#MR32 Bushing Round .3125" (5/16")
5932R0.3281	#MR32 Bushing Round .3281" (21/64")
5932R0.3438	#MR32 Bushing Round .3438" (11/32")
5932R0.3594	#MR32 Bushing Round .3594" (23/64")
5932R0.3750	#MR32 Bushing Round .3750" (3/8")
5932R0.3906	#MR32 Bushing Round .3906" (25/64")
5932R0.4062	#MR32 Bushing Round .4062" (13/32")
5932R0.4219	#MR32 Bushing Round .4219" (27/64")

Order No.	Product Title
5932R1.1406	#MR32 Bushing Round 1.1406" (1-9/64")
5932R1.1562	#MR32 Bushing Round 1.1562" (1-5/32")
5932R1.1719	#MR32 Bushing Round 1.1719" (1-11/64")
5932R1.1875	#MR32 Bushing Round 1.1875" (1-3/16")
5932R1.2031	#MR32 Bushing Round 1.2031" (1-13/64")
5932R1.2188	#MR32 Bushing Round 1.2188" (1-7/32")
5932R1.2344	#MR32 Bushing Round 1.2344" (1-15/64")
5932R1.2500	#MR32 Bushing Round 1.2500" (1-1/4")
Hexagon	
5932H0.1250	#MR32 Bushing Hexagon .1250" (1/8")
5932H0.1562	#MR32 Bushing Hexagon .1562" (5/32")
5932H0.1875	#MR32 Bushing Hexagon .1875" (3/16")
5932H0.2188	#MR32 Bushing Hexagon .2188" (7/32")
5932H0.2500	#MR32 Bushing Hexagon .2500" (1/4")
5932H0.2812	#MR32 Bushing Hexagon .2812" (9/32")
5932H0.3125	#MR32 Bushing Hexagon .3125" (5/16")
5932H0.3438	#MR32 Bushing Hexagon .3438" (11/32")
5932H0.3750	#MR32 Bushing Hexagon .3750" (3/8")
5932H0.4062	#MR32 Bushing Hexagon .4062" (13/32")
5932H0.4375	#MR32 Bushing Hexagon .4375" (7/16")
5932H0.4688	#MR32 Bushing Hexagon .4688" (15/32")
5932H0.5000	#MR32 Bushing Hexagon .5000" (1/2")

5932R0.4375	#MR32 Bushing Round .4375" (7/16")	5932H0.5312	#MR32 Bushing Hexagon .5312"(17/32")
5932R0.4531	#MR32 Bushing Round .4531" (29/64")	5932H0.5625	#MR32 Bushing Hexagon .5625" (9/16")
5932R0.4688	#MR32 Bushing Round .4688" (15/32")	5932H0.5938	#MR32 Bushing Hexagon .5938" (19/32")
5932R0.4844	#MR32 Bushing Round .4844" (31/64")	5932H0.6250	#MR32 Bushing Hexagon .6250" (5/8")
5932R0.5000	#MR32 Bushing Round .5000"(1/2")	5932H0.6562	#MR32 Bushing Hexagon .6562" (21/32")
5932R0.5156	#MR32 Bushing Round .5156" (33/64")	5932H0.6875	#MR32 Bushing Hexagon .6875" (11/16")
5932R0.5312	#MR32 Bushing Round .5312" (17/32")	5932H0.7188	#MR32 Bushing Hexagon .7188" (23/32")
5932R0.5469	#MR32 Bushing Round .5469" (35/64")	5932H0.7500	#MR32 Bushing Hexagon .7500" (3/4")
5932R0.5625	#MR32 Bushing Round .5625" (9/16")	5932H0.7812	#MR32 Bushing Hexagon .7812" (25/32")
5932R0.5781	#MR32 Bushing Round .5781" (37/64")	5932H0.8125	#MR32 Bushing Hexagon .8125" (13/16")
5932R0.5938	#MR32 Bushing Round .5938" (19/32")	5932H0.8438	#MR32 Bushing Hexagon .8438" (27/32")
5932R0.6094	#MR32 Bushing Round .6094" (39/64")	5932H0.8750	#MR32 Bushing Hexagon .8750" (7/8")
5932R0.6250	#MR32 Bushing Round .6250" (5/8")	5932H0.9062	#MR32 Bushing Hexagon .9062" (29/32")
5932R0.6406	#MR32 Bushing Round .6406" (41/64")	5932H0.9375	#MR32 Bushing Hexagon .9375" (15/16")
5932R0.6562	#MR32 Bushing Round .6562" (21/32")	5932H0.9688	#MR32 Bushing Hexagon .9688" (31/32")
5932R0.6719	#MR32 Bushing Round .6719" (43/64")	5932H1.0000	#MR32 Bushing Hexagon 1"
5932R0.6875	#MR32 Bushing Round .6875" (11/16")	5932H1.0313	#MR32 Bushing Hexagon 1.0313" (1-1/32")
5932R0.7031	#MR32 Bushing Round .7031" (45/64")	5932H1.0625	#MR32 Bushing Hexagon 1.0625" (1-1/16")
5932R0.7188	#MR32 Bushing Round .7188" (23/32")	Square	
5932R0.7344	#MR32 Bushing Round .7344" (47/64")	5932S0.1250	#MR32 Bushing Square .1250" (1/8")
5932R0.7500	#MR32 Bushing Round .7500" (3/4")	5932S0.1562	#MR32 Bushing Square .1562" (5/32")
5932R0.7656	#MR32 Bushing Round .7656" (49/64")	5932S0.1875	#MR32 Bushing Square .1875" (3/16")
5932R0.7812	#MR32 Bushing Round .7812" (25/32")	5932S0.2188	#MR32 Bushing Square .2188" (7/32")
5932R0.7969	#MR32 Bushing Round .7969" (51/64")	5932S0.2500	#MR32 Bushing Square .2500" (1/4")
5932R0.8125	#MR32 Bushing Round .8125" (13/16")	5932S0.2812	#MR32 Bushing Square .2812" (9/32")
5932R0.8281	#MR32 Bushing Round .8281" (53/64")	5932S0.3125	#MR32 Bushing Square .3125" (5/16")
5932R0.8438	#MR32 Bushing Round .8438" (27/32")	5932S0.3438	#MR32 Bushing Square .3438" (11/32")
5932R0.8594	#MR32 Bushing Round .8594" (55/64")	5932S0.3750	#MR32 Bushing Square .3750" (3/8")
5932R0.8750	#MR32 Bushing Round .8750" (7/8")	5932S0.4062	#MR32 Bushing Square .4062" (13/32")
5932R0.8906	#MR32 Bushing Round .8906" (57/64")	5932S0.4375	#MR32 Bushing Square .4375" (7/16")
5932R0.9062	#MR32 Bushing Round .9062" (29/32")	5932S0.4688	#MR32 Bushing Square .4688" (15/32")
5932R0.9219	#MR32 Bushing Round .9219" (59/64")	5932S0.5000	#MR32 Bushing Square .5000"(1/2")
5932R0.9375	#MR32 Bushing Round .9375" (15/16")	5932S0.5312	#MR32 Bushing Square .5312"(17/32")
5932R0.9531	#MR32 Bushing Round .9531" (61/64")	5932S0.5625	#MR32 Bushing Square .5625" (9/16")
5932R0.9688	#MR32 Bushing Round .9688" (31/32")	5932S0.5938	#MR32 Bushing Square .5938" (19/32")
5932R0.9844	#MR32 Bushing Round .9844" (63/64")	5932S0.6250	#MR32 Bushing Square .6250" (5/8")
5932R1.0000	#MR32 Bushing Round 1"	5932S0.6562	#MR32 Bushing Square .6562" (21/32")
5932R1.0156	#MR32 Bushing Round 1.0156" (1-1/64")	5932S0.6875	#MR32 Bushing Square .6875" (11/16")
5932R1.0313	#MR32 Bushing Round 1.0313" (1-1/32")	5932S0.7188	#MR32 Bushing Square .7188" (23/32")
5932R1.0469	#MR32 Bushing Round 1.0469" (1-3/64")	5932S0.7500	#MR32 Bushing Square .7500" (3/4")
5932R1.0625	#MR32 Bushing Round 1.0625" (1-1/16")	5932S0.7812	#MR32 Bushing Square .7812" (25/32")
5932R1.0781	#MR32 Bushing Round 1.0781" (1-5/64")	5932S0.8125	#MR32 Bushing Square .8125" (13/16")
5932R1.0938	#MR32 Bushing Round 1.0938" (1-3/32")	5932S0.8438	#MR32 Bushing Square .8438" (27/32")
5932R1.1094	#MR32 Bushing Round 1.1094" (1-7/64")	5932S0.8750	#MR32 Bushing Square .8750" (7/8")
5932R1.1250	#MR32 Bushing Round 1.1250" (1-1/8")		