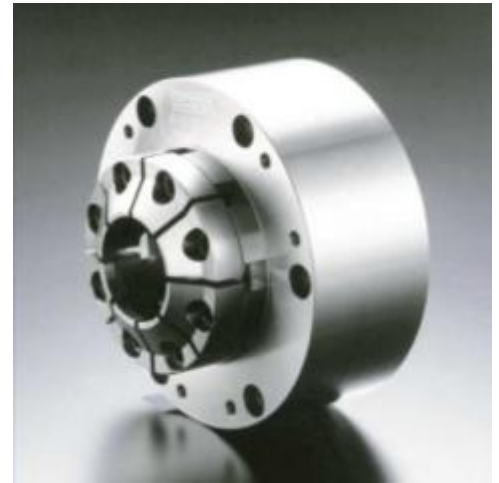


PMT Diaphragm Chucks

SUPER HIGH PRECISION DIAPHRAGM CHUCK

PIONEER's Diaphragm Chuck clamps work pieces 'soft and even' to avoid distortion.

One of the reasons it works so well, is the tensile strength of the unique material used in the Diaphragm's construction. By design, the Diaphragm Chuck is built to be unaffected by the centrifugal force at high-speeds and; it can be used up to 10,000min or over. It ensures 'Super High Precision" and "Stable Performance" in the turning.



Custom Jaw Examples

Diaphragm chucks use a 1 piece jaw system for improved accuracy and easy tool change.

Custom jaws are designed and built to meet your unique work piece for either ID or OD holding.

4 layer AFT and nozzle supplied with air ports are available so the chuck will not close unless the work piece is seated properly on the nozzle.

Repeatability	Within 0.2 Micron , 0.0002mm or 0.0000078"
Maintenance Free	No Lubrication Necessary. Chuck is completely sealed.
Flex. Clamping Power	For both OD & ID clamping, fine adjustment of clamping power is possible.
Excellent High Speed Capability	On any type of chucks, super performance can be obtained at high RPM.
High Durability	Long life of rigidity and accuracy is insured due to unique diaphragm material.
Flex. Application	Both OD & ID clamping is possible with one chuck, and very flexible arrangement of work piece mounting stop is possible.

See PIONEER Chuck Catalog for additional information

AIR FEED TUBE ASSEMBLY

Models Available:

JHP3 For Diaphragm Chuck & Air Chuck up to 8,000 RPM

JHP2 For w/movable AFT Air Chuck up to 8,000 RPM

4L3 For Diaphragm Chuck and For Air Chuck (4 Layer Type)

Not only opening & closing jaws, air blow and/or coolant teed through the center bore of chuck, checking and confirming work piece seated properly or not, is possible.

