

Load Cell



FEATURES

- Suitable for force measurement applications
- Simple installation
- The cylindric shape makes it easy to replace an axis
- Resistant against harsh environment
- Could be adapted for other dimensions and capacities
- Atex approved for hazardous area

DESCRIPTION

The KOSD-40 load cell has a rugged design for harsh environment and is suitable for force measurement and overload protection. The sensing element consists of three sections, the two outer

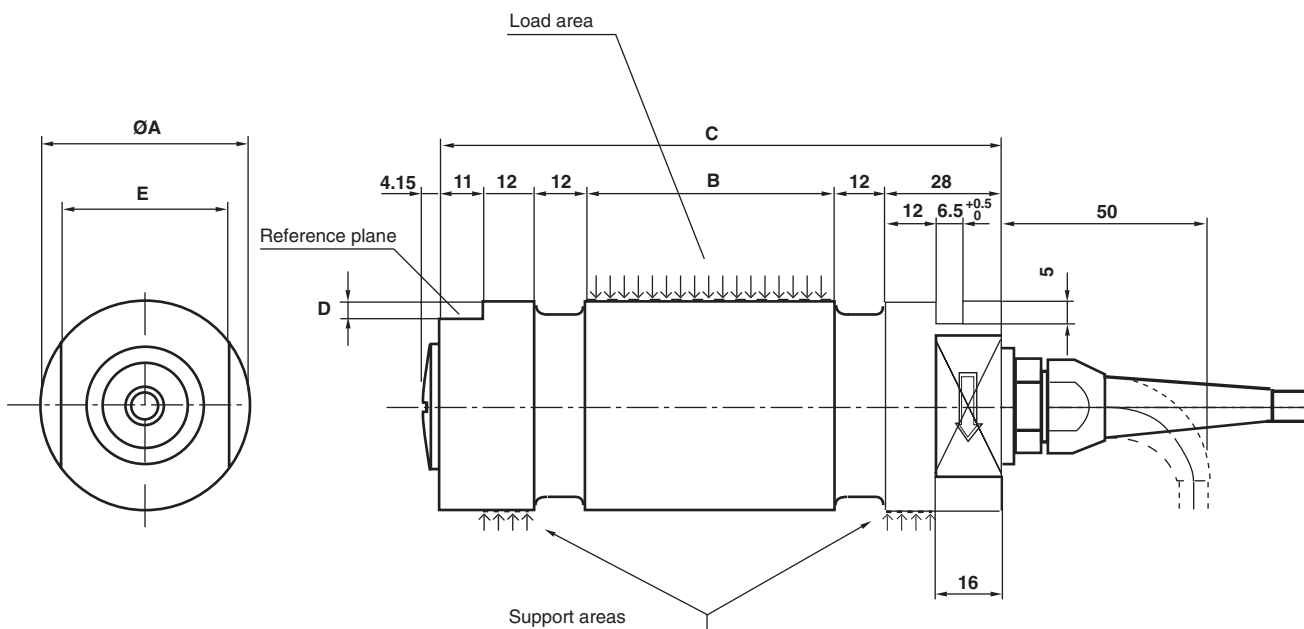
sections constitute supports and the middle section is the load sensing part.

The KOSD-40 can be delivered in a module for load and level monitoring in storage tanks, then called KOM-1.

APPLICATIONS

- Offshore
- Cranes
- Tension measurement
- Level monitoring

OUTLINE DIMENSIONS



RANGE kN	ØA	B	C	D	E
10, 20, 50	40 f8 (- 0.025) (- 0.064)	35	110	4	32
100	50 f8 (- 0.025) (- 0.064)	60	135	5	40
200	70 f8 (- 0.030) (- 0.076)	60	135	5	60

SPECIFICATIONS

Rated load (R.L.)		10, 20, 50, 100, 200	kN
Combined error (terminal)		±0.5	% of R.O.
Repeatability		0.25	% of R.O.
Overload	safe	100*	% of R.L.
	ultimate	200	% of R.L.
Sideload	safe	100	% of R.L.
	ultimate	200	% of R.L.
Input voltage	recommended	10	V DC or AC
	maximum	18	V DC or AC
Input resistance		350±5	ohm
Output resistance		350±5	ohm
Rated output (R.O.)		≈1	mV/V
Zero balance		±5	% of R.O.
Tolerance of shunt calibration values		±1	% of value**
Temperature range		-40 to +80 (+100)***	°C
Temperature effect	on output	+0.04	% of output/°C
	on zero balance	±0.04	% of R.O./°C
Insulation resistance at 200V DC		>4	Gohm
Material		Stainless steel	
Electrical connection		5m shielded four conductor cable	10, 20, 50kN
		10m shielded four conductor cable	100, 200kN
Degree of protection		IP 67	
* Referring to recommended loading case			
** See calibration sheet of the load cell		ATEX certified versions for use in explosive atmospheres are available: II 1GD. EEx ia IIC T4 T _{amb} = 60°C	
*** -40 to +100°C on demand			

