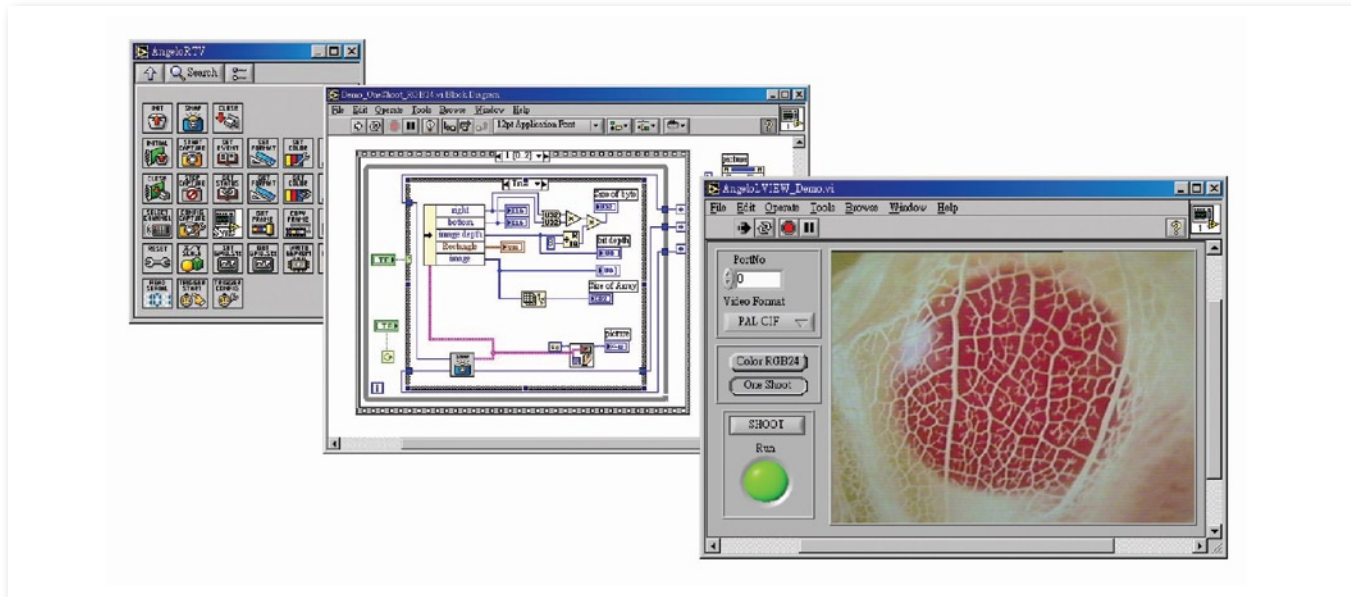


Angelo-LVIEW

LabVIEW™ Driver Support for ADLINK Frame Grabbers



Features

- Visual programming interface
- Supports 32-bit Windows 7/Vista/XP
- Access and configure RTV series cards

What is LabVIEW™?

National Instruments™ LabVIEW™ is an industry-leading software tool for developing measurement, test and control applications. For years, thousands of engineers and scientists have been using LabVIEW™'s powerful graphical programming environment and its built-in data acquisition, analysis, and presentation functions to shorten design periods and increase productivity. As an open development environment, LabVIEW™ allows you to integrate any third-party hardware into measurement and control applications. With standard virtual instrument (VI) interfaces, hardware such as data acquisition cards, image capture cards, and motion control cards from various vendors can be easily used in LabVIEW™. Take advantage of both the powerful LabVIEW™ environment and great flexibility in hardware selection.

Introduction

ADLINK's Angelo-LVIEW interface software packages contain libraries with many virtual instruments (VIs) acting as the interface between ADLINK DLLs and LabVIEW™. Developers familiar with LabVIEW™ can easily take advantage of LabVIEW™'s intuitive graphical programming capability as well as the performance of ADLINK's frame grabbers.

Supported Modules

- PCIe-RTV24, PCI-RTV24, cRTV-24/44

See Chapter 11 for more information on ADLINK vision solutions.

National Instruments and LabVIEW are trademarks of National Instruments Inc.

1

Software & Utilities

2

DAQ

3

PXI

4

Modular Instruments

5

GPIB & Bus Expansion

6

Motion Control

7

Real-time Distributed I/O

8

PAC

9

Remote I/O

10

Communications

11

Vision

12

Fanless Embedded Computers

13

cPCI & Industrial Computers