

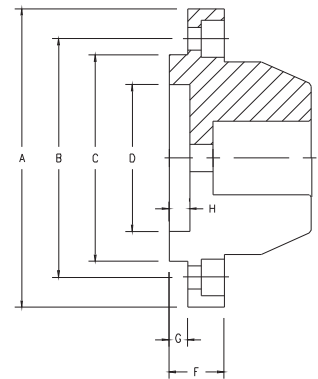
Diaphragm Jaw for JAP100 Chuck

- ▲ Made of ground bearing steel, heat treated to HRC50 for hardened jaws, HRC38 for pre-hardened jaws.
- ▲ Very high accuracy: 0.010mm run-out after jaw pad is changed over (for JATO Diaphragm Chucks).



JAP100 Jaw Dimension Chart

型號	A	B	C	D	F	G	H	Split	Suitable Chuck
JD-60	65mm (2.56")	52mm (2.05")	45mm (1.77")	32mm (1.26")	12mm (0.47")	4.0mm (0.16")	4.5mm (0.18")	6	JAP104
JD-70	75mm (2.95")	60mm (2.36")	50mm (1.97")	37mm (1.46")	14mm (0.55")	5.0mm (0.20")	5.0mm (0.20")	6	JAP105
JD-100	105mm (4.13")	90mm (3.54")	80.2mm (3.16")	65mm (2.56")	14mm (0.55")	5.5mm (0.22")	5.0mm (0.20")	8	JAP106



O.D. Chucking



I.D. Expanding



Step Jaw

Spring Collets



Soft & Harden Jaws

