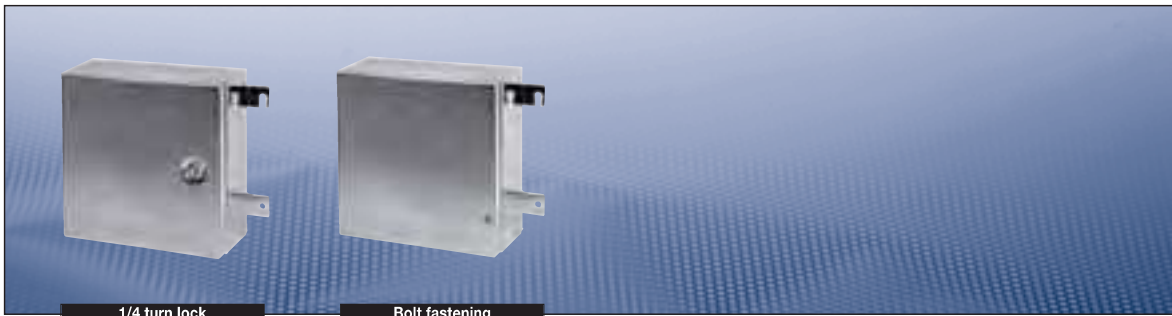


Ex-e/Ex-i terminal enclosures



Ordering details Ex-Cell METRIC up to 2 x 56 terminals

316L SS- 1/4 Turn Lock	Dimensions ¹⁾ H x W x D in mm	Fixing Centres ¹⁾	Weight in kg (empty enclosure)	Terminal mounting rail				Terminal content				
				Rail fixing centres		Rail length		Row orientation vertical				
Fastening		vertical x		vert.	horiz.	vert.	horiz.	2.5 mm ²	4 mm ²	6 mm ²	10 mm ²	16 mm ²
Size		horizontal		vert.	horiz.	vert.	horiz.					
Enclosure dimensions and terminal content												
23/15/13	229x152x127	152x208	2.35	129	52	149	72	1x21	1x17	1x13	1x10	1x 9
26/26/15	260x260x152	170x316	2.8	160	160	180	180	2x27	2x23	1x17	1x13	1x11
30/20/15	305x203x152	203x259	3.4	205	103	225	123	1x36	1x30	1x23	1x18	1x15
30/30/15	305x305x152	203x361	4.6	205	205	225	225	2x36	2x30	2x23	2x18	2x15
30/30/20	305x305x203	203x361	5.8	205	205	225	225	2x36	2x30	2x23	2x18	2x15
40/30/15	406x305x152	267x361	5.7	306	205	326	225	2x56	2x47	2x35	2x28	2x23
40/30/20	406x305x203	267x361	6.6	306	205	326	225	2x56	2x47	2x35	2x28	2x23

316L SS - 1/4 Turn Lock	Available glanding area			Max. Entry Guide (metric)							Order No. ²⁾
	Top & Bottom	Left	Right	Top & Bottom / Left / Right							
Fastening				M16	M20	M25	M32	M40	M50	M63	
Size	(with gland plates fitted) in mm										
Gland entry detail											
23/15/13	108x 58	108x 58	108x 58	6/6/6	2/2/2	2/2/2	1/1/1	-	-	-	XLHS12315130
26/26/15	214x 80	114x 80	114x 80	21/11/11	10/5/5	4/2/2	3/2/2	3/1/1	2/1/1	-	XLHS12626150
30/20/15	156x 80	156x 80	156x 80	15/15/15	7/7/7	3/3/3	2/2/2	2/2/2	2/2/2	-	XLHS13020150
30/30/15	261x 80	156x 80	156x 80	26/15/15	13/7/7	5/3/3	4/2/2	3/2/2	3/2/2	-	XLHS13030150
30/30/20	261x124	214x124	261x124	34/28/34	18/15/18	15/12/15	8/6/8	6/5/6	3/2/3	2/2/2	XLHS13030200
40/30/15	261x 80	261x 80	261x 80	26/26/26	13/13/13	5/5/5	4/4/4	3/3/3	3/3/3	-	XLHS14030150
40/30/20	261x124	261x124	261x124	34/34/34	18/18/18	15/15/15	8/8/8	6/6/6	3/3/3	2/2/2	XLHS14030200

Options					
with 1 gland plate	XLH S1	XXYYZZ 1	with 3 gland plates	XLH S1	XXYYZZ 3
Ex-Cell 316L SS - Bolt Fastening	XLH S1	XXYYZZ0-B	Ex-Cell 304 SS - 1/4 Turn Lock Fastening	XLH S2	XXYYZZ 0
Ex-Cell 304 SS - Bolt Fastening	XLH S2	XXYYZZ0-B	Ex-Cell Painted - 1/4 Turn Lock Fastening	XLH PS	XXYYZZ 0
Ex-Cell Painted - Bolt Fastening	XLH PS	XXYYZZ0-B	Permanent Padlock Hasp Facility (Factory Fitted ONLY)	XLH NN	XXYYZZ0-HASP

Type	Order No.
Example	
30/20/15 with 3 gland plates, painted with bolt fastening and permanent padlock HASP facility	XLHPS 3020153-B-HASP

Notes: ¹⁾ Dimensions drawing see page 7.49

²⁾ Refer to „OPTIONS“ for full order number detail