



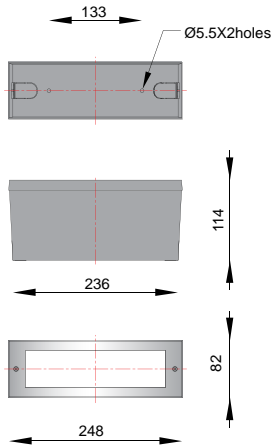
## LED STEP LIGHT 1.8W

### Specification

- Fixture is manufactured in compliance with international standard of general requirements IEC 60598-1, fixed general purpose luminaires IEC 60598-2-1 and recessed luminaire IEC 60598-2-2. Electrical protection class1. Protection against dust and water IP54 for I-BRICK and IP65 for LED Step Light. Protection against mechanical impact IK08 on body and IK06/08 on optical part.
- Luminaire body housing made of high-pressure die cast aluminium alloy. Block out for wall installation in polycarbonate for Step Light and in polyester coated steel for LED Step Light. Corrosion resistance and suitable for outdoor use.
- Chromitized surface treatment, resistant to corrosive environment. Luminaire coated with UV stabilized polyester powder and baked in digital temperature controlled chamber at 200°C.
- Self-extinguishing high impact resistant polycarbonate diffuser for LED Step Light. Material from TEIJIN – Japan. IK08 vandal resistant. Impact resistant white-coated safety tempered glass cover for LED Step Light.
- Molded silicone gasket. Temperature and weather resistant. Working temperature -40°C to +200°C.
- External screws in 316 stainless steel with silicone grease dipping.
- Cable entry protected by PG11 synthesized rubber grommet. Prepare for H05RN-F / H07RN-F cable diameter 7 – 10mm.
- LED chips from NICHIA – Japan. Each assembled on flexible PCB with adhesive surface and mounted on to heat conducting cooling material. Module manufactured from Germany. Working temperature -40°C to +50°C. Recommended to be used in the ambient temperature at -30° C to +30° C
- For LED Step Light, assembled with molded LED lens in polycarbonate with high UV and temperature resistant. Fastening to cooling surface with PU foam adhesive tape of automotive grade.
- Safety extra low voltage 12V constant voltage LED driver. Conform to safety standard EN61347-2-13, electromagnetic compatibility EN55015 and harmonics IEC61000-3-2.
- Terminal block in PA6.6 nickle plated brass insert 600V/24A – VDE approved. Working temperature -40°C to +130°C. For cable with cross section up to 2.5mm<sup>2</sup>. Wiring provided with earth connection.



## DIMENSION



Cable entry with rubber grommet.



Slim front cover.



High quality LED from Nichia.



Power supply conforms to standard.

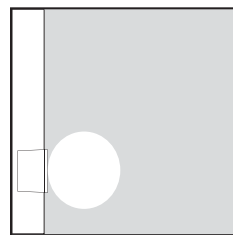
## SPECIFICATION

### Available Color

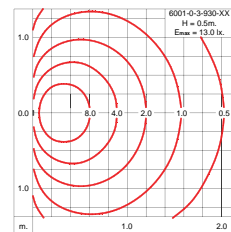
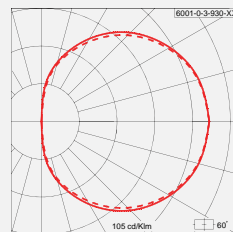
- Black -RAL9005(replace last 2 digits of product code with 01)
- Graphite -RAL7016(replace last 2 digits of product code with 02)
- Dark Grey -RAL7037(replace last 2 digits of product code with 03)
- Aluminium Silver -RAL9006(replace last 2 digits of product code with 04)
- White -RAL9010(replace last 2 digits of product code with 05)

Product Code:	30SL029108EW060W
LED Chip	3LED
Power Consumption	1.8W
Electrical Driver	12V
Flux	150lm
Color Temperature	3,500K
Beam Angle	XX

### Field Angle



### Light Distribution



## ACCESSORIES



Concrete wall recess box  
Polyester coated steel  
Product Code: **31-CW-001-x**