

SAVE ENERGY SAVE EARTH



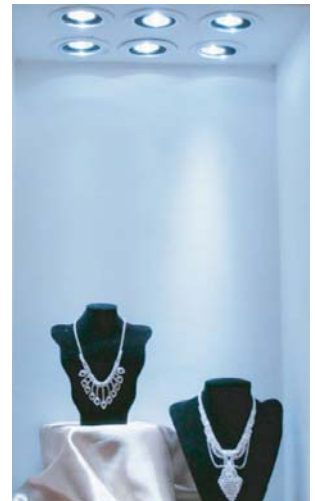
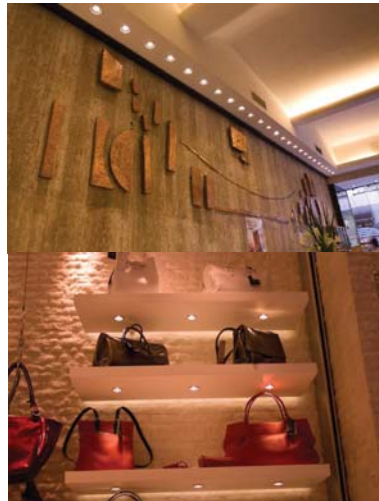
LED MR16 EXTRA 3-5W

3-5W MR16 uses high brightness LED engingwhich gives a superb illuminance.It is ideal for the use in tracks, rail, and pendants in exhibit, architectural and residential applications. Furthermore, the multi-selection on various color offers a great experience in decorative and mood lighting applications.

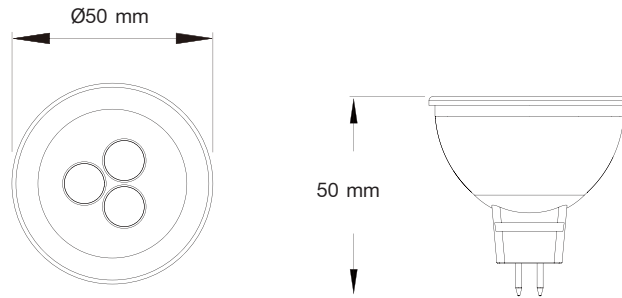
The lamp features standard GU5.3, which offers an instant replacement in MR16 type fixtures.With a life of more than 40,000 hours, it can be used in hard-to-rach locations to prevent a regular maintenance needs.

This product shall be used with LED Driver (Constant Current) Only.

MR16 Extra with DC Transformer.



DIMENSION



Tolerance: ± 1.5 mm

SPECIFICATION

Parameter	Specification	Units
Power Consumption	3 / 5	W
Input Voltage	185~265	VAC
Color Temperature	2,600~3,700 / 6,000~7,000	°K
Color Rendering Index	80 / 75	--
Field Angles	40°	Degree
Life Time	40,000	hrs.
Base	GU5.3	--



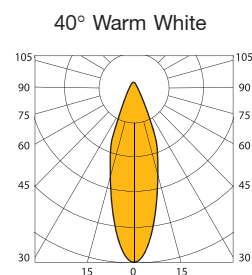
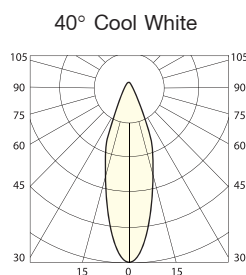
ILLUMINANCE AND FIELD ANGLE

The tables present the illuminance level with respect to different color temperature.

Product Code	Power Consumption	Field Angle	Flux(lm)[Typ.]	CRI	Color	CCT
30M0229003EC040N	3 W	40°	260	75	Cool White	6,000~7,000K
30M0229003EW040N		40°	230	80	Warm White	2,600~3,700K
30M0229005EC040N	5 W	40°	400	75	Cool White	6,000~7,000K
30M0229005EW040N		40°	350	80	Warm White	2,600~3,700K

LIGHT PATTERN

The diagrams present the light patterns with respect to different color temperature and field angle.



RECOMMENDED DRIVER

MR16 SET 3W : DRIVER 9-12V 350mA

MR16 SET 5W : DRIVER 9-12 525 mA

* MR16 SET = LED MR16 EXTRA + DRIVER