

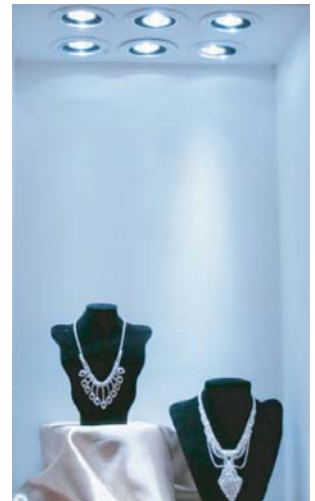
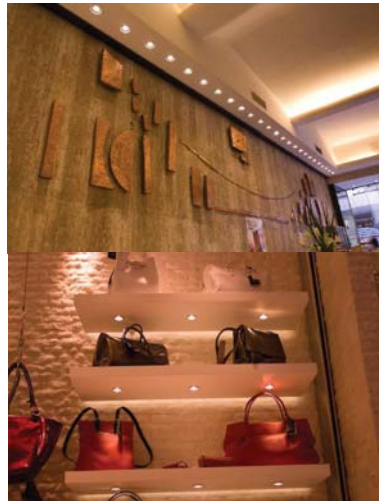


LED MR16 SUPER 3W

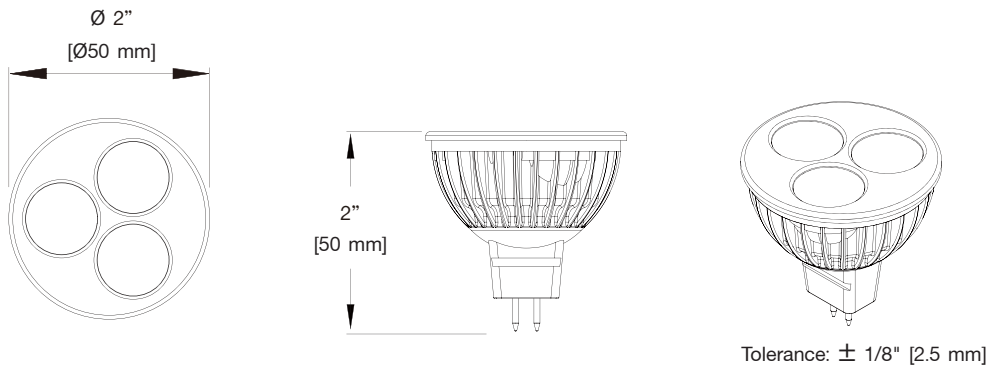
3W MR16 uses high brightness LED enging which gives a super illuminance.It is ideal for the use in tracks, rail, and pendants in exhibit, architectural and residential applications. Furthermore, the multi-selection on various color offers a great experience in decorative and mood lighting applications.

The lamp features standard GU5.3, which offers an instant replacement in MR16 type fixtures.With a life of more than 25,000 hours, it can be used in hard-to-rach locations to prevent a regular maintenance needs.

- Solid State Lighting Technology
- Reduce CO₂ Emission
- Superior Quality Light
- Energy Saving (3W)



DIMENSION



SPECIFICATION

Parameter	Specification	Units
Power Consumption	3	W
Field Angles	38°	Degree
Color Temperature	3,000 / 4,000 / 6,000	$^\circ\text{K}$
Color Rendering Index	80 / 75 / 70	--
Weight	40 ± 5	g.
Life Time	25,000	--
Base	GU5.3	--



ILLUMINANCE AND FIELD ANGLE

The tables present the illuminance level with respect to different color temperature.

Product Code	Power Consumption	Field Angle	Flux(lm)[Typ.]	Lux@ 1m.[Typ.]	Color	CCT
30M0129003EC038N	3 W	38°	220	600	Cool White	5,650~7,000K
30M0129003EN038N		38°	200	500	Neutral White	3,800~4,500K
30M0129003EW038N		38°	180	500	Warm White	2,670~3,050K

LIGHT PATTERN

The diagrams present the light patterns with respect to different color temperature and field angle.

