



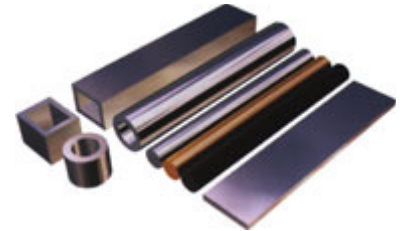
Hakansson Sawblades

Friction Band Saw Blades

For cutting practically every kind of steel regardless of alloy and hardness as well as cast iron.

Suitable for cutting material with thickness 2-25mm at cutting speeds 2000-5000 meter per minute.

Our high silicone steel gives longer blade life and great fatigue resistance.



For cutting thin and difficult to cut materials.

Material thickness

	<i>Under 6mm</i>	<i>6-10mm</i>	<i>12-25mm</i>
Band speed m/min.	2000	3500	5000
Teeth per inch	14	10	10

