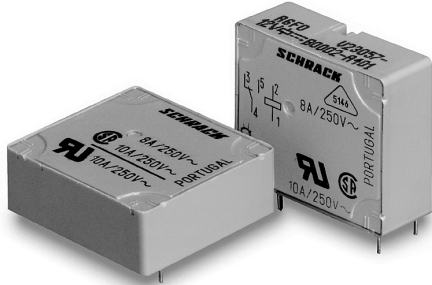


Power PCB Relay RP I

1 pole 8 A



Features

- 1 C/O or 1 N/O contact
- 4 kV coil-contact
- Vertical and horizontal version
- Version with twin contacts
- Wash tight

Applications

I/O modules, heating control, timers

F0151-B



Technical data of approved types on request

Contact data

Configuration	1 C/O contact or 1 N/O contact
Type of contact	standard: single contact
Rated current	8 A
Rated voltage / max.breaking voltage AC	250 Vac / 440 Vac
Maximum breaking capacity AC	2000 VA
Make current (max. 4 s at duty cycle 10%)	15 A
Contact material	AgCdO, Ag

Contact ratings

Type	Load	Operations
RP531	4 A, 30 Vdc, resistive	2×10^6
RP531	1 A, 24 Vdc, inductive L / R=40ms	2×10^5
RP530	1 A, 230 Vac, $\cos\phi=0.4$	5×10^5

Coil data

Nominal voltage	6...60 Vdc
Nominal coil power	450...500 mW
Operate power	240 mW

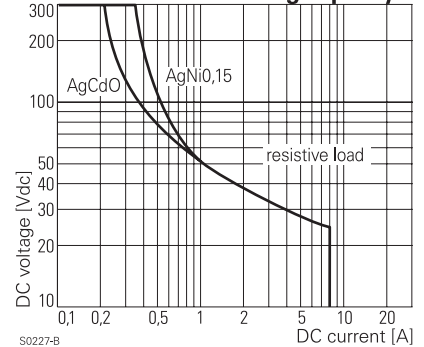
Coil versions

Coil code	Nominal voltage Vdc	Pull-in voltage Vdc	Release voltage Vdc	Maximum voltage Vdc	Coil resistance Ω	Coil current mA
006	6	4.0	0.6	10.6	$80 \pm 10\%$	75.0
012	12	8.0	1.2	21.5	$330 \pm 10\%$	36.4
024	24	16.0	2.4	40.0	$1200 \pm 15\%$	20.0
048	48	32.0	4.8	79.0	$4700 \pm 15\%$	10.2
060	60	40.0	6.0	98.0	$7200 \pm 15\%$	8.3

All figures are given for coil without preenergization, at ambient temperature +20°C

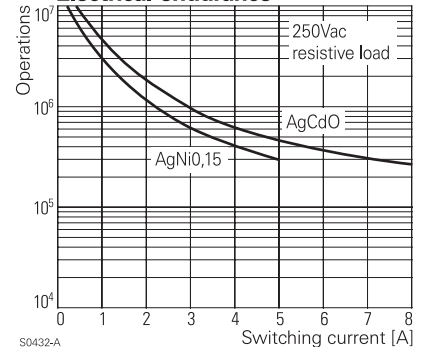
Other coil voltages on request

Max. DC load breaking capacity



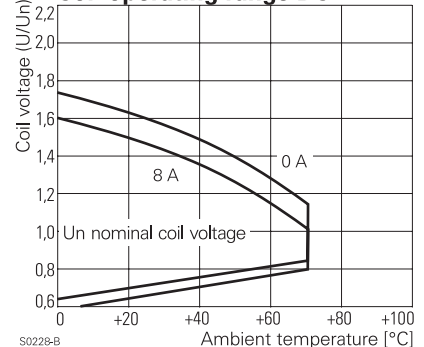
S0227-B

Electrical endurance



S0432-A

Coil operating range DC



S0228-B

Power PCB Relay RP I

1 pole 8 A

Insulation

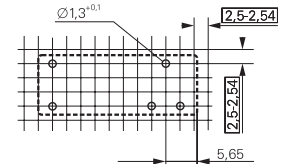
Dielectric strength	coil-contacts	4000 V _{rms}
	open contact circuit	1000 V _{rms}
Clearance / creepage		4 / 4 mm
Insulation to IEC 60664		
Voltage rating		250 V
Pollution degree		3
Overvoltage category		III
Insulation to VDE 0110b (2/79)		
Insulation category / reference voltage		C / 250
Tracking resistance of relay base		CTI 250

Other data

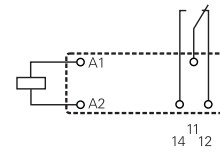
Flammability class according to UL 94	V-0
Ambient temperature	-40...+70 °C
Mechanical life	approx. 20x10 ⁶ operations
Max. switching rate at rated- / minimum load	6 min ⁻¹ / 20 s ⁻¹
Operate- / release time	7 / 3 ms
Bounce time N/O contact/N/C contact	0.5 / 3 ms
Category of protection (IEC 61810)	RT III - wash tight
Relay weight	14 g
Packaging unit	20 / 400 pcs.
Accessories	see accessories RP

PCB layout / terminal assignment

Vertical version

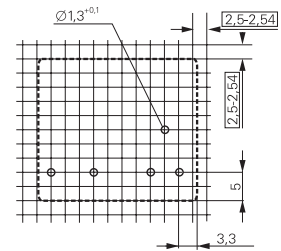


S0257-AH

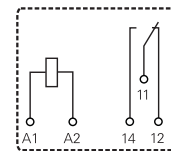


S0257-AB

Horizontal version



S0257-AI



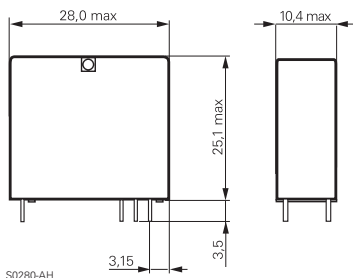
S0257-AE

View on solder pins
Dimensions in mm

Dimensions

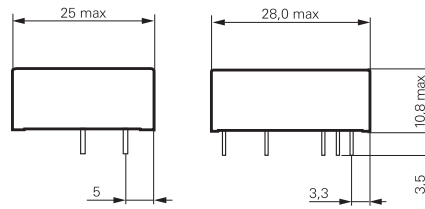
Dimensions in mm

Vertical version



S0280-AH

Horizontal version



S0281-BI

Product key



Type

RP-Relays

Version

- 5 vertical, wash tight
- 6 horizontal, wash tight

Contact configuration

- 1 1 C/O contact
- 3 1 N/O contact

Contact material

- 0 AgCdO
- 1 Ag
- 7 Ag, twin contacts (only in C/O version)

Coil

Coil code: please refer to coil versions table

Rights to change data / design reserved